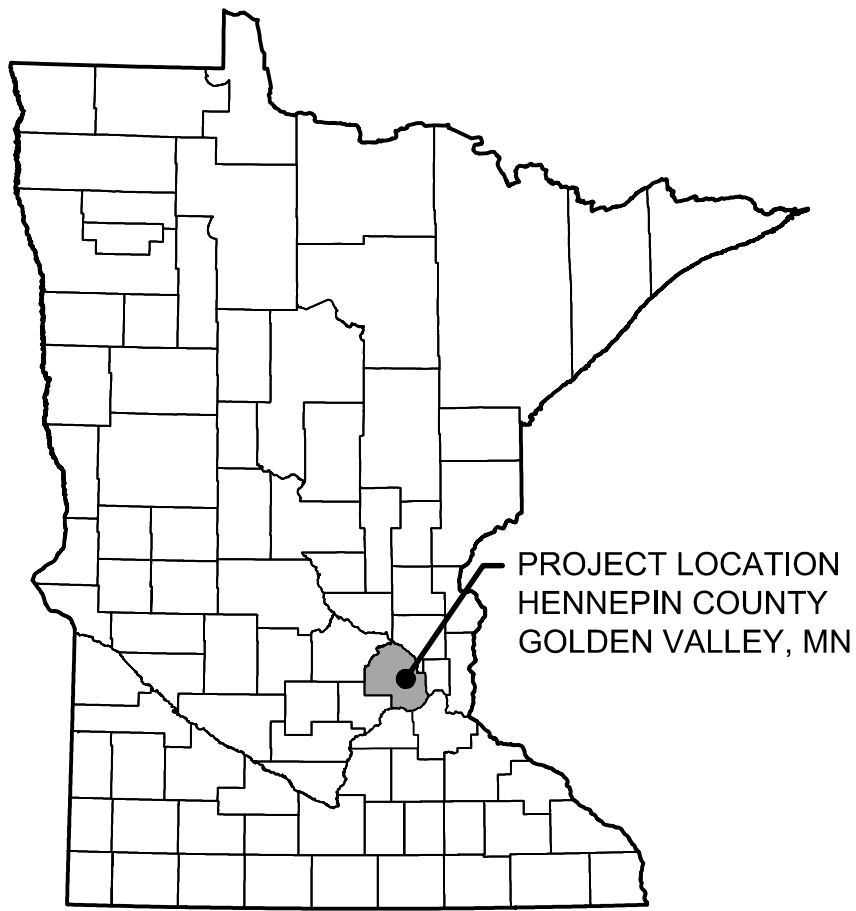


# BASSETT CREEK MAIN STEM RESTORATION - PHASE 2

## BASSETT CREEK WATERSHED MANAGEMENT COMMISSION



PROJECT LOCATION  
HENNEPIN COUNTY  
GOLDEN VALLEY, MN

### MINNESOTA COUNTY MAP

#### CONTACTS:

**ENGINEER CONTACT:**

Jessica Olson  
Barr Engineering Co.  
325 South Lake Avenue  
Duluth, MN 55802  
218-259-7118  
jolson@barr.com

**OWNER'S REPRESENTATIVE CONTACT:**

Laura Jester  
Bassett Creek Watershed Management Commission  
P.O. Box 270825  
Golden Valley, MN 55427  
952-270-1990  
laura.jester@keystonewaters.com

**PROPERTY OWNER'S REPRESENTATIVE:**

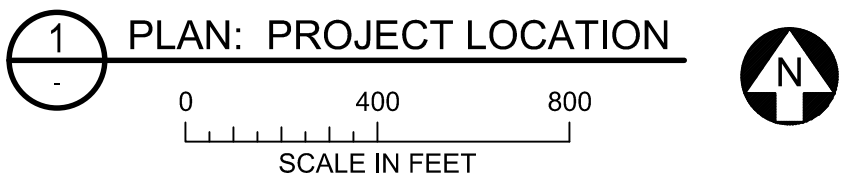
Emma Rakestraw  
City of Golden Valley  
7800 Golden Valley Road  
Golden Valley, MN 55427  
763-593-8084  
erakestraw@goldenvalleymn.gov

#### GENERAL NOTES:

1. CONTOUR DATA SHOWN IN THIS PLAN SET IS BASED ON SURVEY PERFORMED BY BARR ENGINEERING IN MARCH 2025 (LIDAR DRONE) AND APRIL 2025 (SURVEY-GRADE GPS).
2. IMAGERY: NEARMAP PICTOMETRY LTD, AUGUST 2024.
3. HORIZONTAL DATUM AND COORDINATE SYSTEM: HENNEPIN COUNTY COORDINATES, NAD83, US SURVEY FEET.
4. VERTICAL DATUM: NAVD88.



GOPHER STATE ONE CALL:  
CALL BEFORE YOU DIG.  
1-800-252-1166



### INDEX OF SHEETS

- G-01 . . . . TITLE SHEET, PROJECT LOCATION AND SHEET INDEX  
G-02 . . . . GENERAL NOTES AND LEGEND  
G-03 . . . . PLANTING SCHEDULES
- R-01 . . . . VEGETATION RESTORATION PLAN (STA. 0+00 - 9+00)  
R-02 . . . . VEGETATION RESTORATION PLAN (STA. 9+00 - 18+00)  
R-03 . . . . VEGETATION RESTORATION PLAN (STA. 18+00 - 27+00)  
R-04 . . . . VEGETATION RESTORATION PLAN (STA. 27+00 - 36+00)  
R-05 . . . . VEGETATION RESTORATION PLAN (STA. 36+00 - 45+00)  
R-06 . . . . VEGETATION RESTORATION PLAN (STA. 45+00 - 54+00)  
R-07 . . . . VEGETATION RESTORATION PLAN (STA. 54+00 - 63+00)  
R-08 . . . . VEGETATION RESTORATION PLAN (STA. 63+00 - 72+00)  
R-09 . . . . VEGETATION RESTORATION DETAILS  
R-10 . . . . VEGETATION RESTORATION DETAILS

ORIGINAL DRAWING SIZE: ANSI FULL BLEED 0 (22.00 X 34.00 INCHES) PLOT SCALE: 1:1 PLOT DATE: 12/19/2025 3:43 PM  
CADD USER: DILLON R. MARTIN FILE: MDESIGN23272114.0023272114\_P02\_G01.DWG

I HEREBY CERTIFY THAT THIS PLAN, SPECIFICATION, OR REPORT WAS PREPARED BY ME OR UNDER MY DIRECT SUPERVISION AND THAT I AM A DULY LICENSED PROFESSIONAL ENGINEER UNDER THE LAWS OF THE STATE OF MINNESOTA.						- - - - - - - - - - - - - - - C DRM3 BHD JCO 12/22/2025 ISSUED FOR REVIEW B DRM3 BHD JCO 11/13/2025 ISSUED FOR REVIEW A DRM3 BHD JCO 06/20/2025 ISSUED FOR REVIEW						 BARR ENGINEERING CO. 4300 MARKETPOINTE DRIVE SUITE 200 MINNEAPOLIS, MN 55435 PH: 1-800-632-2277 WWW.BARR.COM MINNESOTA ENGINEERING FIRM NUMBER 10104111545						BASSETT CREEK WATERSHED MANAGEMENT COMMISSION GOLDEN VALLEY, MINNESOTA						BASSETT CREEK MAIN STEM RESTORATION - PHASE 2 GOLDEN VALLEY, MINNESOTA TITLE SHEET, PROJECT LOCATION, AND SHEET INDEX						BARR PROJECT # 23272114.00	
PRINTED NAME - _____																								DWG # G-01							
SIGNATURE _____																								REV # C							
DATE - _____ LICENSE # - _____						# BY CHK APP DATE RELEASE/REVISION DESCRIPTION																									

100% DESIGN  
ISSUED FOR REVIEW  
NOT FOR CONSTRUCTION



ORIGINAL DRAWING SIZE: ANSI FULL BLEED D (22.00 X 34.00 INCHES) PLOT SCALE: 1:1 PLOT DATE: 12/19/2025 3:44 PM  
CADD USER: DILLON R. MARTIN FILE MIDSEIGN23272114.0023272114\_Pht2\_G-02.DWG

GENERAL NOTES:

TOPO AND CONTROL GROUND SURVEY CONDUCTED BY BARR ENGINEERING IN MARCH 2025 IN HENNEPIN COUNTY FEET PROJECTION.

IMAGERY: NEARMAP PICTOMETRY LTD, 2024.

1. CONTRACTOR IS RESPONSIBLE TO LOCATE AND FIELD VERIFY ALL EXISTING UTILITIES PRIOR TO WORK.
2. MINIMIZE DISTURBANCE OF EXISTING VEGETATION, WITH THE EXCEPTION OF AREAS OF VEGETATION REMOVAL AS INDICATED ON THE DRAWINGS.
3. DO NOT DISTURB TREES AND SHRUBS NOT MARKED FOR REMOVAL, INCLUDING MINIMIZING DISTURBANCE OF SOILS WITHIN THE TREE DRIPLINE. DO NOT STOCKPILE MATERIALS OR DRIVE VEHICLES/EQUIPMENT WITHIN TREE DRIPLINE(S) UNLESS APPROVED BY ENGINEER.
4. ALL EXISTING ROADS, PARKING LOTS, TRAILS, FENCES, SIGNS, OR SIMILAR SHALL BE PROTECTED DURING CONSTRUCTION, EXCEPT WHERE SHOWN ON PLANS FOR REMOVAL. CONTRACTOR RESPONSIBLE TO COORDINATE SURVEYS WITH THE CITY AND/OR OWNER TO DOCUMENT PRE-CONSTRUCTION EXISTING CONDITION ISSUES.
5. CONTRACTOR SHALL INSTALL AND MAINTAIN ALL EROSION CONTROL BMPS PRIOR TO COMMENCEMENT OF GRADING FOR EACH LOCATION DURING CONSTRUCTION. EROSION CONTROL PLANS ARE PROVIDED INSIDE THE PROJECT STORMWATER POLLUTION PREVENTION PLAN (SWPPP).
6. ALL GROUND DISTURBANCE GENERATED FROM GRADING ACTIVITIES SHALL BE STABILIZED AND RESTORED WITH TOPSOIL, SEED W/COVER CROP AND EROSION CONTROL BLANKET OR STRAW MULCH.
7. CONTRACTOR TO MAINTAIN EXISTING STREAM BOTTOM WIDTH SO AS NOT TO DECREASE CREEK CROSS SECTIONAL AREA DURING RIPRAP INSTALLATION.
8. CONSTRUCTION LIMITS AS SHOWN ARE APPROXIMATE. FINAL CONSTRUCTION LIMITS TO BE COORDINATED WITH THE OWNER AND/OR ENGINEER AND STAKED IN THE FIELD.
9. STREAM FEATURE LOCATIONS MAY BE FIELD FIT AS DIRECTED BY ENGINEER.
10. SWEEP PAVEMENT DAILY, OR AS REQUIRED TO KEEP FROM TRACKING MATERIALS OFFSITE.
11. REPAIR AND REMOVE ITEMS THAT ARE DAMAGED. REPAIR AND REPLACE DAMAGED ITEMS TO A CONDITION AT LEAST EQUAL TO THAT WHICH EXIST PRIOR TO THE START OF WORK.
12. OBTAIN ANY REQUIRED PERMITS, NOT PROVIDED BY THE ENGINEER, BEFORE PERFORMING WORK.
13. CONTRACTOR TO COORDINATE WITH LANDOWNERS THAT DESIRE TURF RESTORATION INSTEAD OF NATIVE RESTORATION FOR REPAIRING ACCESS ROUTES.
14. THE CONTRACTOR SHALL KEEP PAVEMENTS, FIXTURES AND BUILDINGS CLEAN AND UNSTAINED. ANY DAMAGE TO EXISTING FACILITIES SHALL BE REPAIRED AT THE CONTRACTOR'S EXPENSE. THE PROJECT SITE SHALL BE KEPT CLEAR OF CONSTRUCTION WASTES AND DEBRIS.

EROSION & SEDIMENT CONTROL NOTES:

1. INSTALL PERIMETER EROSION CONTROL AT THE LOCATIONS SHOWN ON THE PLANS PRIOR TO THE COMMENCEMENT OF ANY UPSLOPE LAND DISTURBANCE OR CONSTRUCTION ACTIVITIES.
2. INSTALL INLET PROTECTION AT ALL PUBLIC AND PRIVATE CATCH BASIN INLETS WHICH RECEIVE RUNOFF FROM THE DISTURBED AREAS. CONTRACTOR SHALL CLEAN, REMOVE SEDIMENT, OR REPLACE STORM DRAIN INLET PROTECTION DEVICES ON A ROUTINE BASIS SUCH THAT THE DEVICES ARE FULLY FUNCTIONAL FOR THE NEXT RAIN EVENT. SEDIMENT DEPOSITED IN AND/OR PLUGGING DRAINAGE SYSTEMS IS THE RESPONSIBILITY OF THE CONTRACTOR. HAY BALES OR FILTER FABRIC WRAPPED GRATES ARE NOT ALLOWED FOR INLET PROTECTION.
3. LOCATE SOIL OR DIRT STOCKPILES NO LESS THAN 25 FEET FROM ANY PUBLIC OR PRIVATE ROADWAY OR DRAINAGE CHANNEL. IF REMAINING FOR MORE THAN SEVEN DAYS, STABILIZE THE STOCKPILES BY MULCHING, VEGETATIVE COVER, TARP, OR OTHER MEANS. CONTROL EROSION FROM ALL STOCKPILES BY PLACING SILT BARRIERS AROUND THE PILES. TEMPORARY STOCKPILES LOCATED ON PAVED SURFACES MUST BE NO LESS THAN TWO FEET FROM THE DRAINAGE/GUTTER LINE AND SHALL BE COVERED IF LEFT MORE THAN 24 HOURS.
4. NATURAL TOPOGRAPHY AND SOIL CONDITIONS MUST BE PROTECTED, INCLUDING RETENTION ONSITE OF NATIVE TOPSOIL TO THE GREATEST EXTENT POSSIBLE.
5. ADDITIONAL MEASURES, SUCH AS HYDRAULIC MULCHING AND OTHER PRACTICES AS SPECIFIED BY THE COMMISSION MUST BE USED ON SLOPES OF 3:1 (H:V) OR STEEPER TO PROVIDE ADEQUATE STABILIZATION.
6. CONSTRUCTION SITE WASTE SUCH AS DISCARDED BUILDING MATERIALS, CONCRETE TRUCK WASHOUT, CHEMICALS, LITTER AND SANITARY WASTE MUST BE PROPERLY MANAGED.
7. ALL TEMPORARY EROSION AND SEDIMENT CONTROL BMPS MUST BE MAINTAINED UNTIL COMPLETION OF CONSTRUCTION AND VEGETATION IS ESTABLISHED SUFFICIENTLY TO ENSURE STABILITY OF THE SITE, AS DETERMINED BY THE COMMISSION, AND ALL FINAL STABILIZATION REQUIREMENTS ARE ACHIEVED.
8. ALL DISTURBED AREAS MUST BE STABILIZED WITHIN 7 CALENDAR DAYS AFTER LAND-DISTURBING WORK HAS TEMPORARILY OR PERMANENTLY CEASED ON A PROPERTY THAT DRAINS TO AN IMPAIRED WATER, WITHIN 14 DAYS ELSEWHERE.
9. THE PERMITTEE MUST, AT A MINIMUM, INSPECT, MAINTAIN AND REPAIR ALL DISTURBED SURFACES AND ALL EROSION AND SEDIMENT CONTROL FACILITIES AND SOIL STABILIZATION MEASURES EVERY DAY WORK IS PERFORMED ON THE SITE AND AT LEAST WEEKLY UNTIL LAND-DISTURBING ACTIVITY HAS CEASED. THEREAFTER, THE PERMITTEE MUST PERFORM THESE RESPONSIBILITIES AT LEAST WEEKLY UNTIL VEGETATIVE COVER IS ESTABLISHED. THE PERMITTEE WILL MAINTAIN A LOG OF ACTIVITIES UNDER THIS SECTION FOR INSPECTION BY THE DISTRICT ON REQUEST.
10. CHANGES TO APPROVED EROSION CONTROL PLAN MUST BE APPROVED BY THE EROSION CONTROL INSPECTOR PRIOR TO IMPLEMENTATION. CONTRACTOR TO PROVIDE INSTALLATION AND DETAILS FOR ALL PROPOSED ALTERNATE TYPE DEVICES.
11. IF DEWATERING OR PUMPING OF WATER IS NECESSARY, THE CONTRACTOR IS RESPONSIBLE FOR OBTAINING ALL NECESSARY PERMITS AND/OR APPROVALS PRIOR TO DISCHARGE OF ANY WATER FROM THE SITE. IF THE DISCHARGE FROM THE DEWATERING OR PUMPING PROCESS IS TURBID OR CONTAINS SEDIMENT LADEN WATER, IT MUST BE TREATED THROUGH THE USE OF SEDIMENT TRAPS, VEGETATIVE FILTER STRIPS, OR OTHER SEDIMENT REDUCING MEASURES SUCH THAT THE DISCHARGE IS NOT VISIBLY DIFFERENT FROM THE RECEIVING WATER. ADDITIONAL EROSION CONTROL MEASURES MAY BE REQUIRED AT THE DISCHARGE POINT TO PREVENT SCOUR EROSION.
12. ACTIVITIES MUST BE CONDUCTED SO AS TO MINIMIZE THE POTENTIAL TRANSFER OF AQUATIC INVASIVE SPECIES (E.G., ZEBRA MUSSELS, EURASIAN WATERMILFOIL, ETC.) TO THE MAXIMUM EXTENT POSSIBLE. SEE SECTION 4.6 OF THE SWPPP (SHEET G-03) FOR FURTHER DETAIL.
13. WHEREVER CONSTRUCTION ACCESS ROUTE CROSSES EXISTING TRAILS, PROTECT WITH MATTING OR ENGINEER-APPROVED ALTERNATIVE.

TREE REMOVAL/PROTECTION NOTES:

1. THE CONTRACTOR SHALL AVOID DAMAGING EXISTING TREES. DO NOT STORE OR DRIVE HEAVY MATERIALS OVER TREE ROOTS. DO NOT DAMAGE TREE BARK OR BRANCHES.
2. ADDITIONAL TREE REMOVALS MAY BE REQUESTED AND APPROVED AT TIME OF CONSTRUCTION.
3. CONTRACTOR SHALL FOLLOW ALL ROAD RESTRICTION REGULATIONS WHEN REMOVING TREES.
4. LANDSCAPE ARCHITECT SHALL MARK ALL TREES FOR REMOVAL PRIOR TO ANY CONSTRUCTION ACTIVITY. COORDINATE WITH LANDSCAPE ARCHITECT TWO (2) WEEKS PRIOR TO CONSTRUCTION.
5. REMOVE AND DISPOSE OF ALL WOOD AND DEBRIS IN ACCORDANCE WITH ALL LOCAL RULES AND REGULATIONS.
6. CONTRACTOR TO VERIFY AND RECORD QUANTITY OF TREES REMOVED WITH DIAMETER GREATER THAN 6".
7. ALL TREES NOT MARKED FOR REMOVAL SHALL BE AVOIDED AND ANY GRADING OR COMPACTION WITHIN THE DRIPLINE SHALL BE MINIMIZED.
8. CONSTRUCTION MATERIALS, STOCKPILES, EQUIPMENT, AND TEMPORARY FACILITIES SHALL NOT BE STORED OR OPERATED WITHIN THE TREE PROTECTION ZONE (EQUAL TO DRIPLINE).
9. ROOTS OUTSIDE OF THE TREE PROTECTION ZONE EXPOSED OR DAMAGED DURING EXCAVATION OR OTHER CONSTRUCTION ACTIVITY SHALL BE CLEANLY CUT AS DIRECTED BY THE CITY FORESTER.
10. ADDITIONAL TREE PROTECTION MEASURES MAY BE REQUIRED.

GENERAL LANDSCAPE NOTES:

1. PLANTING SHALL CONFORM TO MNDOT SPEC 2571, PLANT INSTALLATION AND ESTABLISHMENT, EXCEPT AS INDICATED OTHERWISE IN THE SPECIFICATIONS.
2. INFORM THE LANDSCAPE ARCHITECT OF PLANTING PRIOR TO PLANT DELIVERY.
3. CONTRACTOR SHALL COORDINATE LAYOUT OF ALL PLANTS WITH DIRECTION OF LANDSCAPE ARCHITECT IN THE FIELD. PLUGS TO BE PLACED IN THE FIELD WITH DIRECTION FROM LANDSCAPE ARCHITECT.
4. CONFIRM ALL QUANTITIES, SHAPES AND LOCATIONS OF SEEDING AND PLANTING AREAS; ADJUST QUANTITIES AS REQUIRED TO CONFORM TO THE SITE CONDITIONS. CONFIRM ANY ADJUSTMENTS WITH THE LANDSCAPE ARCHITECT.
5. LOCATE ALL UTILITIES. NOTIFY THE LANDSCAPE ARCHITECT OF ANY CONFLICTS WITH PLANT INSTALLATION.
6. LONG-TERM STORAGE OF MATERIALS OR SUPPLIES ON-SITE WILL NOT BE ALLOWED. ANY PLANT STOCK NOT PLANTED ON DAY OF DELIVERY SHALL BE HEELED IN AND WATERED UNTIL INSTALLATION. PLANTS NOT MAINTAINED IN THIS MANNER WILL BE REJECTED.
7. THE PLAN TAKES PRECEDENCE OVER THE PLANT SCHEDULE IF DISCREPANCIES EXIST. ADVISE LANDSCAPE ARCHITECT OF ANY DISCREPANCIES.
8. IMMEDIATELY AFTER SEEDING, NO MORE THAN 12 HOURS, INSTALL EROSION CONTROL PRODUCTS, PER MNDOT SPECIFICATION 2575.
9. REFER TO SPECIFICATIONS FOR ADDITIONAL PLANTING, RESTORATION, AND MAINTENANCE INFORMATION. IN THE CASE OF ANY DISCREPANCIES BETWEEN THE DETAILS, PLANS, OR SPECIFICATIONS, THE SPECIFICATIONS SHALL GOVERN.

SEEDING:

10. ALL EXOTIC INVASIVE PLANTS AND WEEDS WITHIN THE SEEDING AREAS SHALL BE SPRAYED WITH HERBICIDE 14 DAYS PRIOR TO SEEDING OR AS PER MANUFACTURE'S RECOMMENDATION. SIGNAGE INDICATING THE USE OF HERBICIDES MUST BE POSTED ON SITE.
11. ALL HERBICIDE APPLICATION SHALL BE APPLIED BY A LICENSED APPLICATOR WITHIN THE STATE OF MINNESOTA.
12. SEED IN ACCORDANCE WITH THE SPECIFICATIONS.
13. COVER CROP IS TO BE SEEDED WITHIN ALL AREAS.
14. REFER TO SPECIFICATIONS FOR ADDITIONAL INFORMATION. IN THE CASE OF ANY DISCREPANCIES BETWEEN THIS DETAIL, PLANS, OR SPECIFICATIONS, THE SPECIFICATIONS SHALL GOVERN.

MAINTENANCE AND CARE:

15. MAINTENANCE SHALL BEGIN IMMEDIATELY AFTER EACH PORTION OF THE WORK IS IN PLACE. PLANT MATERIAL SHALL BE PROTECTED AND MAINTAINED UNTIL THE INSTALLATION OF PLANTINGS IS COMPLETE. INSPECTION HAS BEEN MADE AND PLANTING IS ACCEPTED EXCLUSIVE OF THE GUARANTEE.
16. MAINTENANCE SHALL INCLUDE WATERING, WEEDING, MULCHING, REMOVAL OF DEAD MATERIAL PRIOR TO GROWING SEASON, RE-SETTING PLANTS AND PROPER GRADE, AND KEEPING PLANTS IN A PLUMB POSITION.
17. WATERING: MAINTAIN A WATERING SCHEDULE WHICH WILL THOROUGHLY WATER ALL PLANTS ONCE A WEEK. IN EXTREMELY HOT, DRY WEATHER, WATER MORE OFTEN AS REQUIRED BY INDICATIONS OF HEAT STRESS SUCH AS WILTING LEAVES. CHECK MOISTURE UNDER MULCH PRIOR TO WATERING TO DETERMINE NEED. CONTRACTOR SHALL MAKE THE NECESSARY ARRANGEMENTS FOR WATER. WATERING WILL BE CONSIDERED INCIDENTAL TO THE CONTRACT.
18. ALL AREAS WITHIN THE CONSTRUCTION LIMITS SHALL BE MANAGED AND MAINTAINED PER THE SPECIFICATIONS.

SOIL LOOSENING & AMENDMENT REQUIREMENTS:

19. ANY COMPACTION OF PREVIOUSLY LOOSENEED SOIL MUST BE RELOOSENEED PRIOR TO TOPSOILING OR PLANT INSTALLATION. FINISH GRADE AND POWER ROTO-TILL ALL DISTURBED AREAS PER MNDOT2574.3.A.4.
20. NO RUBBER TIERED EQUIPMENT IN SEEDING AREAS; LOW GROUND PRESSURE TRACKED EQUIPMENT ONLY. ANY COMPACTION OF NATIVE SOILS OR PREVIOUSLY LOOSENEED SOIL MUST BE LOOSENEED.
21. ANY SOILS DISTURBED THROUGH GRADING OR COMPACTED DUE TO CONSTRUCTION SHALL BE LOOSENEED BEFORE FINAL PLANTING. CONTRACTOR IS TO USE A COMPACTION TESTER TO ENSURE COMPACTION IN PLANTING HOLES AND IN SEEDING AREAS DOES NOT EXCEED 200 PSI TO A DEPTH OF AT LEAST 16 INCHES. LOOSENING OF COMPACTED AREAS SHALL BE CONSIDERED INCIDENTAL TO THE CONTRACT.

MASTER LEGEND

- EXISTING 10' CONTOUR
- EXISTING 2' CONTOUR
- EXISTING PROPERTY LINE
- EXISTING EASEMENT
- EXISTING STORM SEWER
- EXISTING SANITARY SEWER
- EXISTING GAS LINE
- EXISTING OVERHEAD ELECTRIC
- EXISTING WATERMAIN
- EXISTING UNDERGROUND FIBER OPTIC
- EXISTING FENCE
- EXISTING WETLAND DELINEATION
- OHWL
- 100-YEAR HWL
- AVERAGE WETLAND BUFFER
- MINIMUM WETLAND BUFFER
- RESTORATION LIMITS
- DELINEATED WETLAND
- REMOVE INVASIVE SPECIES
- RIPARIAN SEED MIX
- WOODLAND SEED MIX
- TURF SEED MIX
- RIPRAP
- TOE WOOD
- VRSS
- GRADING WITH LIVE STAKES/PLANTINGS
- PLUG PLANTING AREA
- PROPOSED REPLACEMENT TREE
- FASCINES
- COIR LOGS

PHASE 1 PROJECT LEGEND

- EXISTING TREE REMOVAL
- PROPOSED 5' CONTOUR
- PROPOSED 1' CONTOUR
- PROPOSED TREE PROTECTION FENCING
- PROPOSED STORM SEWER
- CONSTRUCTION ACCESS
- ROOT WAD
- BOULDER CROSS VANE
- J-HOOK BOULDER VANE
- SILT FENCE
- SEDIMENT CONTROL LOGS
- EXISTING LIGHT POLE
- EXISTING UTILITY POLE
- EXISTING HYDRANT
- EXISTING SIGN
- EXISTING SANITARY MANHOLE
- EXISTING STORM MANHOLE
- EXISTING TREE

100% DESIGN  
ISSUED FOR REVIEW  
NOT FOR CONSTRUCTION

I HEREBY CERTIFY THAT THIS PLAN, SPECIFICATION, OR REPORT WAS PREPARED BY ME OR UNDER MY DIRECT SUPERVISION AND THAT I AM A DULY LICENSED PROFESSIONAL ENGINEER UNDER THE LAWS OF THE STATE OF MINNESOTA.						<div><div><div><div></div><div></div><div></div><div></div></div><div><b>BARR</b><sup>®</sup></div></div><div><div>BARR ENGINEERING CO. 4300 MARKETPOINTE DRIVE SUITE 200 MINNEAPOLIS, MN 55435</div><div>PH: 1-800-632-2277 WWW.BARR.COM MINNESOTA ENGINEERING FIRM NUMBER 10104111545</div></div></div>						BASSETT CREEK WATERSHED MANAGEMENT COMMISSION GOLDEN VALLEY, MINNESOTA						BASSETT CREEK MAIN STEM RESTORATION - PHASE 2 GOLDEN VALLEY, MINNESOTA						BARR PROJECT # 23272114.00					
PRINTED NAME - _____																													
SIGNATURE _____																													
DATE ____ LICENSE # ____																													



ORIGINAL DRAWING SIZE: ANSI FULL BLEED 0 (22.00 X 34.00 INCHES) PLOT SCALE: 1:1 PLOT DATE: 12/19/2025 3:44 PM  
CADD USER: DILLON R. MARTIN FILE: MIDESIGN23272114\_00123272114\_Pb2\_Gr02.DWG

WOODLAND SEED MIX

Common Name	Scientific Name	PLS Rate (lb/ac)	% of Mix (by weight)
Blue Grama	Bouteloua gracilis	0.80	1.44%
Hairy Wood Chess	Bromus pubescens	1.25	3.00%
Beak Grass	Diarrhena obovata	0.50	1.20%
Bottlebrush Grass	Elymus hystrix	1.3	3.12%
Riverbank Wild Rye	Elymus riparius	2	4.79%
Silky Wild Rye	Elymus villosus	0.50	1.20%
Fowl Bluegrass	Poa palustris	0.75	1.80%
Little Bluestem	Schizachyrium scoparium	1	2.40%
	Grasses Subtotal	7.90	19%
Plains Oval Sedge	Carex brevior	0.2	0.48%
Field Oval Sedge	Carex molesta	0.15	0.36%
Awl-fruit Sedge	Carex stipata	0.3	0.72%
Palm Sedge	Carex muskingumensis	0.3	0.72%
Common Wood Sedge	Carex blanda	0.05	0.12%
	Sedges Subtotal	1.00	2%
Red Baneberry	Actaea rubra	0.25	0.60%
White Snakeroot	Ageratina altissima	0.06	0.14%
Wild Garlic	Allium canadense	0.4	0.96%
Canada Anemone	Anemone canadensis	0.3	0.72%
Tall Thimbleweed	Anemone virginiana	0.1	0.24%
Rue Anemone	Aneomella thalictroides	0.05	0.12%
Columbine	Aquilegia canadensis	0.08	0.19%
Jack-In-The-Pulpit	Arisaema triphyllum	0.75	1.80%
Wild Ginger	Asarum canadense	0.4	0.96%
Poke Milkweed	Asclepias exaltata	0.125	0.30%
False Aster	Boftonia asteroides	0.02	0.05%
Spring Beauty	Claytonia virginica	0.075	0.18%
Point-Leaf Tick Trefoil	Desmodium glutinosum	0.8	1.92%
Big-leaved Aster	Eurybia macrophylla	0.1	0.24%
Bottle Gentain	Gentiana andrewsii	0.01	0.02%
Wild Geranium	Geranium maculatum	0.5	1.20%
Woodland Sunflower	Helianthus divaricatus	0.5	1.20%
Virginia Waterleaf	Hydrophyllum virginianum	0.25	0.60%
Spotted Touch Me Not	Impatiens capensis	0.4	0.96%
False Lily of the Valley	Maianthemum canadense	0.3	0.72%
Solomon's Plume	Maianthemum racemosa	0.5	1.20%
Sweet Cicely	Osmorhiza claytonii	0.75	1.80%
Woodland Phlox	Phlox divaricata	0.2	0.48%
Solomon's Seal	Polygonatum biflorum	0.4	0.96%
Cutleaf Coneflower	Rudbeckia laciniata	0.35	0.84%
Zig Zag Goldenrod	Solidago flexicaulis	0.05	0.12%
Elm-leaved Goldenrod	Solidago ulmifolia	0.02	0.05%
Calico Aster	Symphotrichum lateriflorus	0.075	0.18%
	Forbs Subtotal	7.82	19%
	Natives Subtotal	16.72	40.07%
Oats	Avena sativa	25.00	59.93%
	Cover Crop Subtotal	25.00	59.93%
	Total	41.72	100%

RIPARIAN EDGE SEED MIX

Common Name	Scientific Name	PLS Rate (lb/ac)	% of Mix (by weight)
Hairy Wood Chess	Bromus pubescens	1	2.77%
Canada Blue Joint Grass	Calamagrostis canadensis	0.05	0.14%
Beak Grass	Diarrhena obovata	0.5	1.39%
Riverbank Wild Rye	Elymus riparius	1.5	4.16%
Silky Wild Rye	Elymus villosus	0.25	0.69%
Virginia Wild Rye	Elymus virginicus	2	5.54%
Rattlesnake Grass	Glyceria canadensis	0.5	1.39%
Reed Manna Grass	Glyceria grandis	0.3	0.83%
Fowl Manna Grass	Glyceria striata	0.35	0.97%
Rice Cut Grass	Leersia oryzoides	0.5	1.39%
Fowl Bluegrass	Poa palustris	0.2	0.55%
	Grasses Subtotal	7.15	20%
Plains Oval Sedge	Carex brevior	0.4	1.11%
Porcupine Sedge	Carex hystericina	0.5	1.39%
Field Oval Sedge	Carex molesta	0.3	0.83%
Awl-fruit Sedge	Carex stipata	0.3	0.83%
Fox Sedge	Carex vulpinoidea	0.3	0.83%
Tussock Sedge	Carex stricta	0.25	0.69%
Dark green Bulrush	Scirpus atrovirens	0.1	0.28%
Woolgrass	Scirpus cyperinus	0.06	0.17%
	Sedges Subtotal	2.21	6%
White Snakeroot	Ageratina altissima	0.06	0.17%
Canada Anemone	Anemone canadensis	0.1	0.28%
Swamp Milkweed	Asclepias incarnata	0.2	0.55%
Marsh Marigold	Caltha palustris	0.1	0.28%
Boneset	Eupatorium perfoliatum	0.03	0.08%
Grass-leaved Goldenrod	Euthamia graminifolia	0.05	0.14%
Sweet Joe-Pye Weed	Eutrochium purpureum	0.05	0.14%
Virginia Waterleaf	Hydrophyllum virginianum	0.25	0.69%
Great Blue lobelia	Lobelia siphilitica	0.03	0.08%
Blue Monkey Flower	Mimulus ringens	0.03	0.08%
Obedient Plant	Physostegia virginiana	0.2	0.55%
Virginia Mountain Min	Pycnanthemum virginanum	0.01	0.03%
Cutleaf Coneflower	Rudbeckia laciniata	0.2	0.55%
Red-stemmed Aster	Symphyotrichum puniceum	0.03	0.08%
Bunched Ironweed	Vernonia fasciculata	0.1	0.28%
Purple Meadow Rue	Thalictrum dasycarpum	0.3	0.83%
	Forbs Subtotal	1.74	5%
	Natives Subtotal	11.10	30.75%
Oats	Avena sativa	25.00	69.25%
	Cover Crop Subtotal	25.00	69.25%
	Total	36.10	100%

TURF SEED MIX

TWIN CITY SEED BLUE RESILIENCE™ TALL FESCUE & KENTUCKY BLUEGRASS MIX  
SEED PER MANUFACTURES RECOMMENDED RATE.

PLUGS

Common Name	Scientific Name	Size	Qty
Wild Leek	Allium tricoccum	PLUG	300
Angelica	Angelica atropurpurea	PLUG	225
Clasping Dogbane	Apocynum sibiricum	PLUG	950
Swamp Milkweed	Asclepias incarnata	PLUG	650
American Spikenard	Aralia racemosa	PLUG	650
Fringed Sedge	Carex crinita	PLUG	380
Pennsylvania Sedge	Carex pennsylvanica	PLUG	1175
Blue Cohosh	Caulophyllum thalictroides	PLUG	650
Big-leaved Aster	Eurybia macrophylla	PLUG	1075
Sweet Indian Plantain	Hasteola suaveolens	PLUG	750
Giant Sunflower	Helianthus giganteus	PLUG	200
False Sunflower	Heliopsis helianthoides	PLUG	350
Cardinal Flower	Lobelia cardinalis	PLUG	380
Fringed Loosestrife	Lysimachia ciliata	PLUG	330
Lion's Foot	Nabalus alba	PLUG	625
Sensitive Fern	Onoclea sensibilis	PLUG	775
Jacobs Ladder	Polemonium reptans	PLUG	850
Marsh Cinquefoil	Potentilla palustris	PLUG	325
Cup Plant	Silphium perfoliatum	PLUG	200
		TOTAL	10840

TREE REPLACEMENT SCHEDULE

Common Name	Scientific Name	Size	Quantity
American Basswood	Tilia americana	10 G CONT.	3
Sugar Maple	Acer saccharum	10 G CONT.	3
Black Cherry	Prunus serotina	10 G CONT.	3
Hackberry	Celtis occidentalis	10 G CONT.	3
Musciewood	Carpinus caroliniana	10 G CONT.	3
		Total:	15

- NOTES  
1. DISTRIBUTE TREE SPECIES EVENLY IN LOCATIONS NOTED IN DRAWINGS

100% DESIGN  
ISSUED FOR REVIEW  
NOT FOR CONSTRUCTION

I HEREBY CERTIFY THAT THIS PLAN, SPECIFICATION, OR REPORT WAS PREPARED BY ME OR UNDER MY DIRECT SUPERVISION AND THAT I AM A DULY LICENSED PROFESSIONAL ENGINEER UNDER THE LAWS OF THE STATE OF MINNESOTA.

PRINTED NAME - \_\_\_\_\_

SIGNATURE \_\_\_\_\_

DATE - \_\_\_\_\_ LICENSE # - \_\_\_\_\_

-	-	-	-	-	-	-
-	-	-	-	-	-	-
-	-	-	-	-	-	-
C	DRM3	BHD	JCO	12/22/2025	ISSUED FOR REVIEW	
B	DRM3	BHD	JCO	11/13/2025	ISSUED FOR REVIEW	
A	DRM3	BHD	JCO	06/20/2025	ISSUED FOR REVIEW	
#	BY	CHK	APP	DATE	RELEASE/REVISION DESCRIPTION	



BARR ENGINEERING CO.  
4300 MARKETPOINTE DRIVE  
SUITE 200  
MINNEAPOLIS, MN 55435

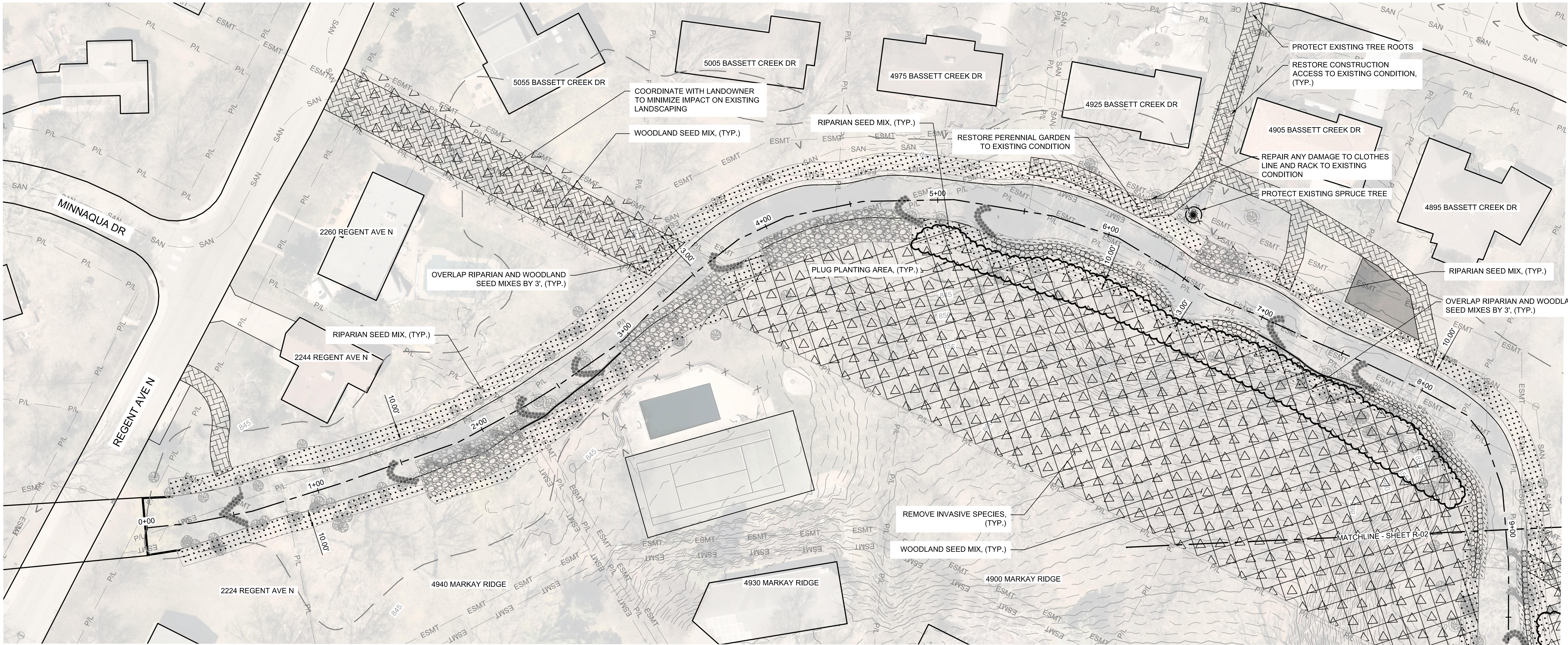
PH: 1-800-632-2277  
WWW.BARR.COM  
MINNESOTA ENGINEERING FIRM  
NUMBER 10104111545

BASSETT CREEK WATERSHED MANAGEMENT COMMISSION  
GOLDEN VALLEY, MINNESOTA

BASSETT CREEK MAIN STEM RESTORATION - PHASE 2  
GOLDEN VALLEY, MINNESOTA  
PLANTING SCHEDULES

BARR PROJECT #	23272114.00
DWG #	G-03
REV #	C





1 PLAN: BASSETT CREEK VEGETATION RESTORATION (STA. 0+00 TO 9+00)

0 30 60  
SCALE IN FEET

GENERAL NOTES:

- COORDINATE WITH LANDOWNERS TO CONFIRM THEIR RESTORATION SEEDING PREFERENCES.
- ALL LANDSCAPING TO BE RESTORED TO EQUAL OR BETTER CONDITION THAN PRE-CONSTRUCTION

PLANTING NOTES

- PLUGS TO BE LAID OUT IN THE FIELD BY LANDSCAPE ARCHITECT.
- ALL PLUGS PLANTED 24" O.C.

PLUG SCHEDULE

Common Name	Scientific Name	Size	Qty
Wild Leek	Allium tricoccum	PLUG	100
Clasping Dogbane	Apocynum sibiricum	PLUG	200
American Spikenard	Aralia racemosa	PLUG	150
Fringed Sedge	Carex crinita	PLUG	100
Pennsylvania Sedge	Carex pennsylvanica	PLUG	250
Blue Cohosh	Caulophyllum thalictroides	PLUG	150
Big-leaved Aster	Eurybia macrophylla	PLUG	200
Sweet Indian Plantain	Hasteola suaveolens	PLUG	150
Cardinal Flower	Lobelia cardinalis	PLUG	75
Fringed Loosestrife	Lysimachia ciliata	PLUG	100
Lion's Foot	Nabalus alba	PLUG	150
Sensitive Fern	Onolcea sensibilis	PLUG	150
Jacobs Ladder	Polemonium reptans	PLUG	150
Marsh Cinquefoil	Potentilla palustris	PLUG	75
		TOTAL	2000

100% DESIGN  
ISSUED FOR REVIEW  
NOT FOR CONSTRUCTION

ORIGINAL DRAWING SIZE: ANSI FULL BLEED D (22.00 X 34.00 INCHES) PLOT SCALE: 1:1 PLOT DATE: 12/19/2025 3:45 PM  
CADD USER: DILLON R. MARTIN FILE: MDESIGN23272114.0023272114\_R-XX.DWG

I HEREBY CERTIFY THAT THIS PLAN, SPECIFICATION, OR REPORT WAS PREPARED BY ME OR UNDER MY DIRECT SUPERVISION AND THAT I AM A DULY LICENSED PROFESSIONAL ENGINEER UNDER THE LAWS OF THE STATE OF MINNESOTA.

PRINTED NAME: \_\_\_\_\_  
SIGNATURE: \_\_\_\_\_  
DATE: \_\_\_\_\_ LICENSE #: \_\_\_\_\_

-	-	-	-	-	-	
-	-	-	-	-	-	
-	-	-	-	-	-	
C	DRM3	BHD	JCO	12/22/2025	ISSUED FOR REVIEW	
B	DRM3	BHD	JCO	11/13/2025	ISSUED FOR REVIEW	
A	DRM3	BHD	JCO	06/20/2025	ISSUED FOR REVIEW	
#	BY	CHK	APP	DATE	RELEASE/REVISION DESCRIPTION	



**BARR**

BARR ENGINEERING CO.  
4300 MARKETPOINTE DRIVE  
SUITE 200  
MINNEAPOLIS, MN 55435

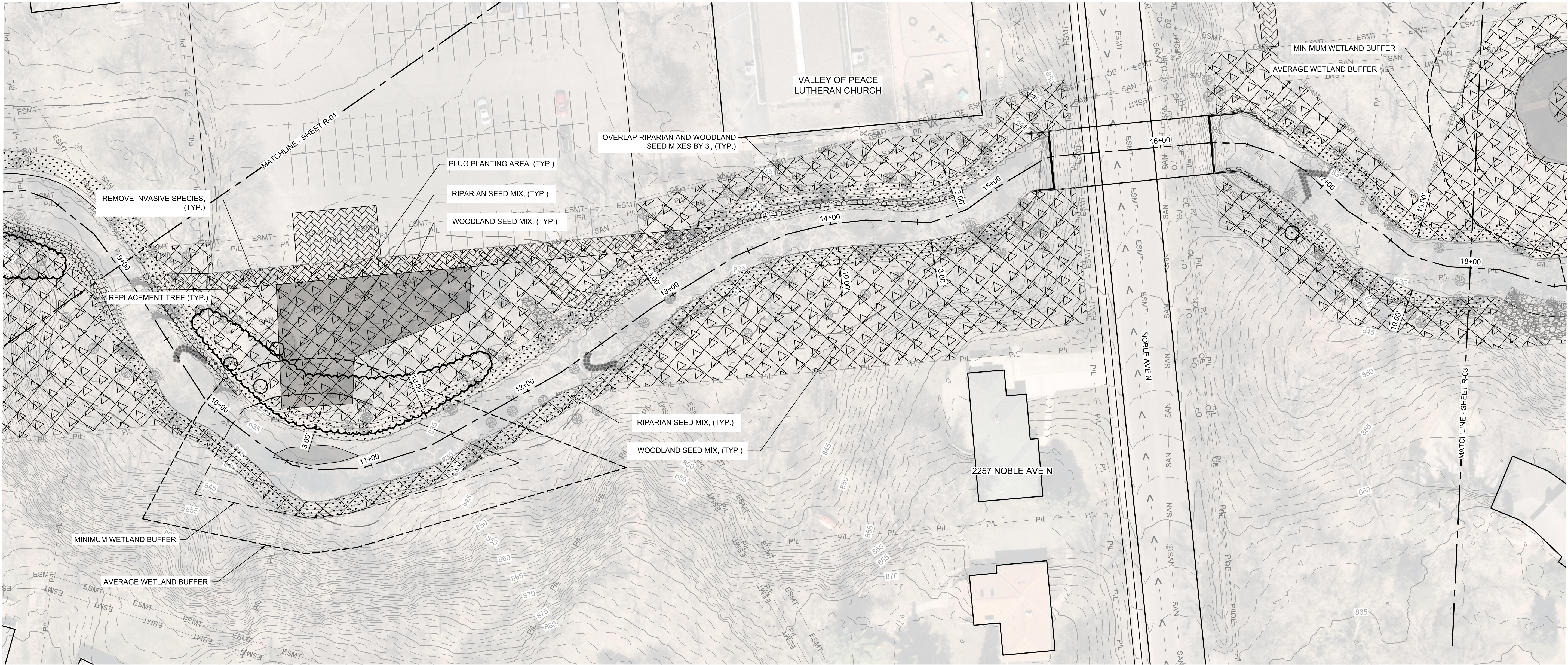
PH: 1-800-632-2277  
WWW.BARR.COM  
MINNESOTA ENGINEERING FIRM  
NUMBER 10104111545

BASSETT CREEK WATERSHED MANAGEMENT COMMISSION  
GOLDEN VALLEY, MINNESOTA

BASSETT CREEK MAIN STEM RESTORATION - PHASE 2  
GOLDEN VALLEY, MINNESOTA  
VEGETATION RESTORATION PLAN  
(STA. 0+00 TO 9+00)

BARR PROJECT #	23272114.00
DWG #	R-01
REV #	C





GENERAL NOTES:

- COORDINATE WITH LANDOWNERS TO CONFIRM THEIR RESTORATION SEEDING PREFERENCES.
- ALL LANDSCAPING TO BE RESTORED TO EQUAL OR BETTER CONDITION THAN PRE-CONSTRUCTION

PLANTING NOTES

- PLUGS TO BE LAID OUT IN THE FIELD BY LANDSCAPE ARCHITECT.
- ALL PLUGS PLANTED 24" O.C.

PLUG SCHEDULE

Common Name	Scientific Name	Size	Qty
Clasping Dogbane	<i>Apocynum sibiricum</i>	PLUG	175
Swamp Milkweed	<i>Asclepias incarnata</i>	PLUG	200
Fringed Sedge	<i>Carex crinita</i>	PLUG	30
Pennsylvania Sedge	<i>Carex pennsylvanica</i>	PLUG	200
Big-leaved Aster	<i>Eurybia macrophylla</i>	PLUG	200
Sweet Indian Plantain	<i>Hasteola suaveolens</i>	PLUG	150
False Sunflower	<i>Heliopsis helianthoides</i>	PLUG	100
Cardinal Flower	<i>Lobelia cardinalis</i>	PLUG	30
Fringed Loosetrife	<i>Lysimachia ciliata</i>	PLUG	30
Sensitive Fern	<i>Onoclea sensibilis</i>	PLUG	50
Jacobs Ladder	<i>Polemonium reptans</i>	PLUG	150
		TOTAL	1315

100% DESIGN  
ISSUED FOR REVIEW  
NOT FOR CONSTRUCTION

ORIGINAL DRAWING SIZE: ANSI FULL BLEED D (22.00 X 34.00 INCHES) PLOT SCALE: 1:1 PLOT DATE: 12/19/2025 3:47 PM  
CADD USER: DILLON R. MARTIN FILE: MDESIGN\23272114.00\23272114\_R-XX.DWG

I HEREBY CERTIFY THAT THIS PLAN, SPECIFICATION, OR REPORT WAS PREPARED BY ME OR UNDER MY DIRECT SUPERVISION AND THAT I AM A DULY LICENSED PROFESSIONAL ENGINEER UNDER THE LAWS OF THE STATE OF MINNESOTA.

PRINTED NAME: -  
SIGNATURE: \_\_\_\_\_  
DATE: - LICENSE #: -

-	-	-	-	-	-	-
-	-	-	-	-	-	-
-	-	-	-	-	-	-
C	DRM3	BHD	JCO	12/22/2025	ISSUED FOR REVIEW	
B	DRM3	BHD	JCO	11/13/2025	ISSUED FOR REVIEW	
A	DRM3	BHD	JCO	06/20/2025	ISSUED FOR REVIEW	
#	BY	CHK	APP	DATE	RELEASE/REVISION DESCRIPTION	



**BARR**

BARR ENGINEERING CO.  
4300 MARKETPOINTE DRIVE  
SUITE 200  
MINNEAPOLIS, MN 55435

PH: 1-800-632-2277  
WWW.BARR.COM  
MINNESOTA ENGINEERING FIRM  
NUMBER 10104111545

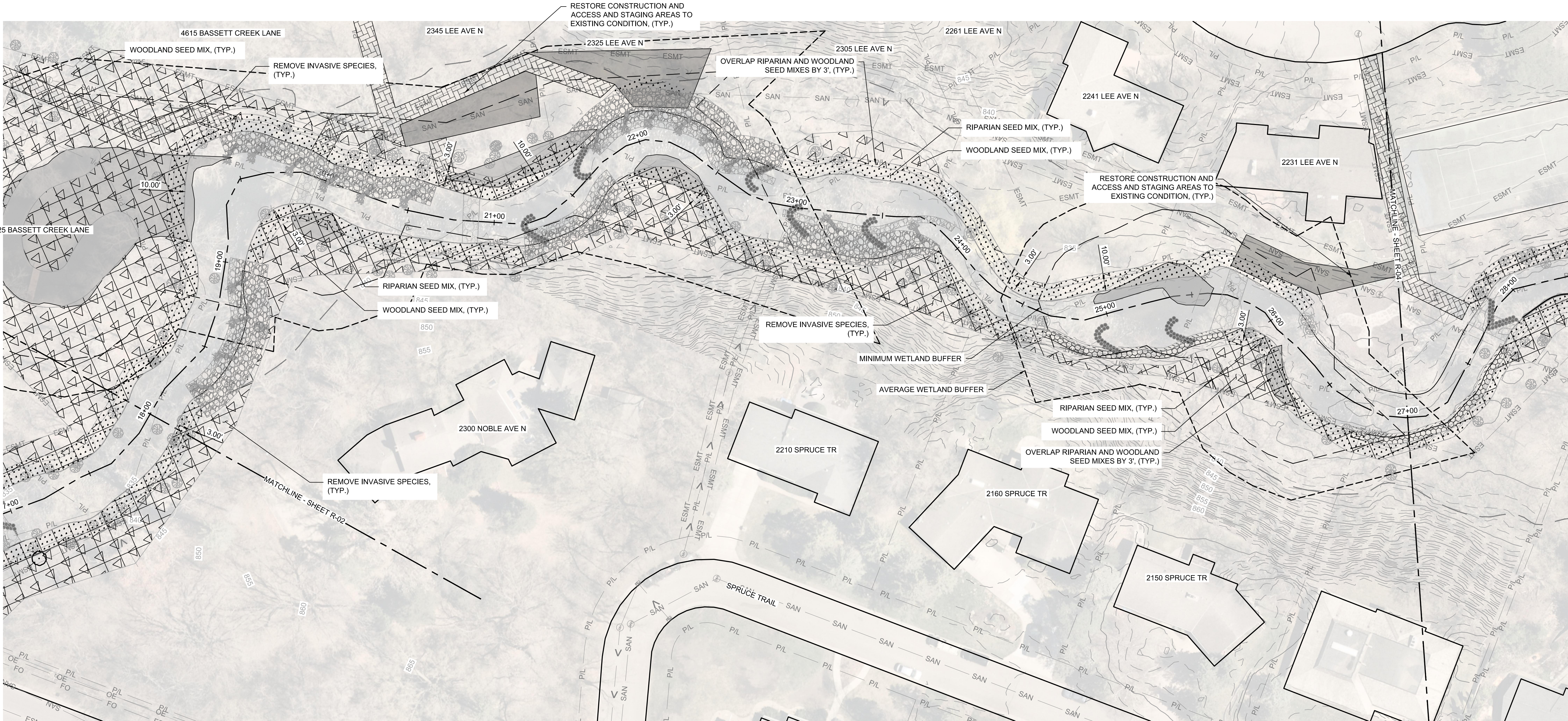
BASSETT CREEK WATERSHED MANAGEMENT COMMISSION  
GOLDEN VALLEY, MINNESOTA

BASSETT CREEK MAIN STEM RESTORATION - PHASE 2  
GOLDEN VALLEY, MINNESOTA  
VEGETATION RESTORATION PLAN  
(STA. 9+00 TO 18+00)

BARR PROJECT #	23272114.00
DWG #	R-02
REV #	C



ORIGINAL DRAWING SIZE: ANSI FULL BLEED 0 (22.00 X 34.00 INCHES) PLOT SCALE: 1:1 PLOT DATE: 12/19/2025 3:49 PM  
CADD USER: DILLON R. MARTIN FILE: MDESIGN\23272114\_00\23272114\_R-XX.DWG



- GENERAL NOTES:
- COORDINATE WITH LANDOWNERS TO CONFIRM THEIR RESTORATION SEEDING PREFERENCES.
  - ALL LANDSCAPING TO BE RESTORED TO EQUAL OR BETTER CONDITION THAN PRE-CONSTRUCTION

100% DESIGN  
ISSUED FOR REVIEW  
NOT FOR CONSTRUCTION

I HEREBY CERTIFY THAT THIS PLAN, SPECIFICATION, OR REPORT WAS PREPARED BY ME OR UNDER MY DIRECT SUPERVISION AND THAT I AM A DULY LICENSED PROFESSIONAL ENGINEER UNDER THE LAWS OF THE STATE OF MINNESOTA.

PRINTED NAME -  
SIGNATURE -  
DATE - LICENSE # -

-	-	-	-	-	-	-
-	-	-	-	-	-	-
C	DRM3	BHD	JCO	12/22/2025	ISSUED FOR REVIEW	
B	DRM3	BHD	JCO	11/13/2025	ISSUED FOR REVIEW	
A	DRM3	BHD	JCO	06/20/2025	ISSUED FOR REVIEW	
#	BY	CHK	APP	DATE	RELEASE/REVISION DESCRIPTION	



**BARR**

BARR ENGINEERING CO.  
4300 MARKETPOINTE DRIVE  
SUITE 200  
MINNEAPOLIS, MN 55435

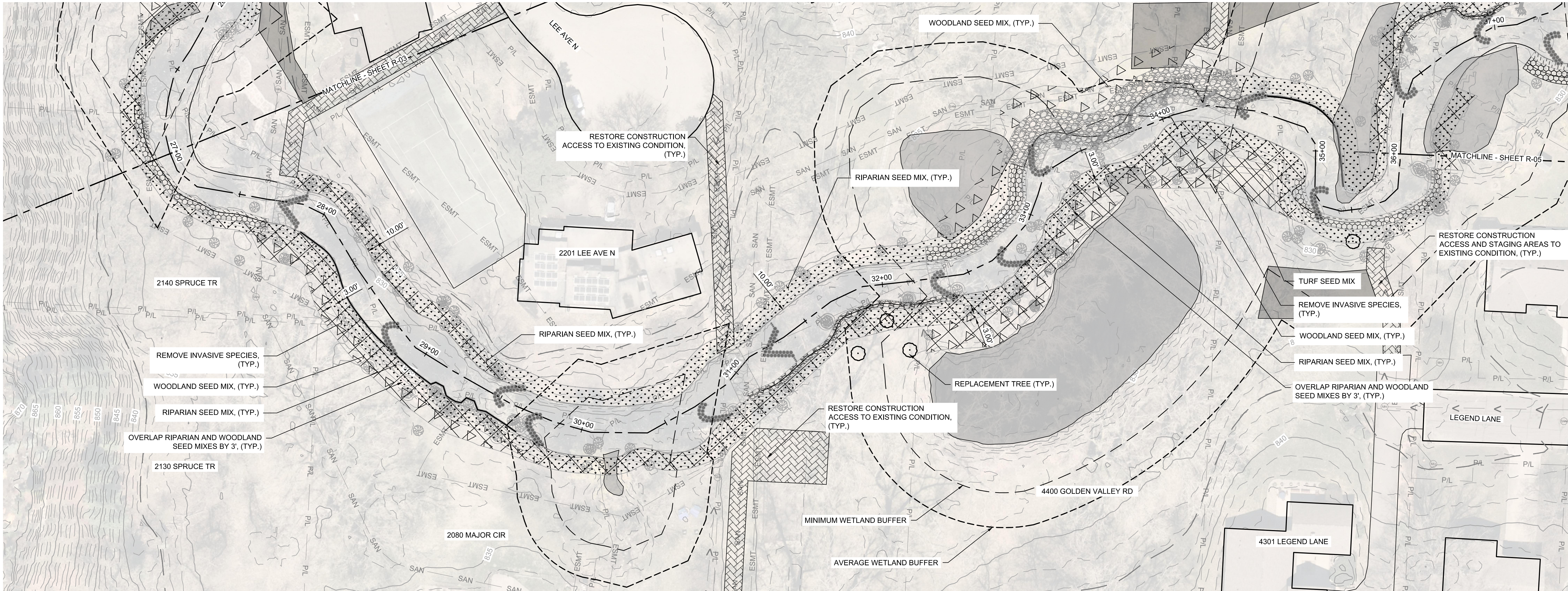
PH: 1-800-632-2277  
WWW.BARR.COM  
MINNESOTA ENGINEERING FIRM  
NUMBER 10104111545

BASSETT CREEK WATERSHED MANAGEMENT COMMISSION  
GOLDEN VALLEY, MINNESOTA

BASSETT CREEK MAIN STEM RESTORATION - PHASE 2  
GOLDEN VALLEY, MINNESOTA  
VEGETATION RESTORATION PLAN  
(STA. 18+00 TO 27+00)

BARR PROJECT #	23272114.00
DWG #	R-03
REV #	C





1 PLAN: BASSETT CREEK VEGETATION RESTORATION (STA. 27+00 TO 36+00)

0 30 60  
SCALE IN FEET

N

- GENERAL NOTES:
- COORDINATE WITH LANDOWNERS TO CONFIRM THEIR RESTORATION SEEDING PREFERENCES.
  - ALL LANDSCAPING TO BE RESTORED TO EQUAL OR BETTER CONDITION THAN PRE-CONSTRUCTION

100% DESIGN  
ISSUED FOR REVIEW  
NOT FOR CONSTRUCTION

I HEREBY CERTIFY THAT THIS PLAN, SPECIFICATION, OR REPORT WAS PREPARED BY ME OR UNDER MY DIRECT SUPERVISION AND THAT I AM A DULY LICENSED PROFESSIONAL ENGINEER UNDER THE LAWS OF THE STATE OF MINNESOTA.

PRINTED NAME -  
SIGNATURE -  
DATE - LICENSE # -

-	-	-	-	-	-	-
-	-	-	-	-	-	-
-	-	-	-	-	-	-
C	DRM3	BHD	JCO	12/22/2025	ISSUED FOR REVIEW	
B	DRM3	BHD	JCO	11/13/2025	ISSUED FOR REVIEW	
A	DRM3	BHD	JCO	06/20/2025	ISSUED FOR REVIEW	
#	BY	CHK	APP	DATE	RELEASE/REVISION DESCRIPTION	



**BARR**

BARR ENGINEERING CO.  
4300 MARKETPOINTE DRIVE  
SUITE 200  
MINNEAPOLIS, MN 55435

PH: 1-800-632-2277  
WWW.BARR.COM  
MINNESOTA ENGINEERING FIRM  
NUMBER 10104111545

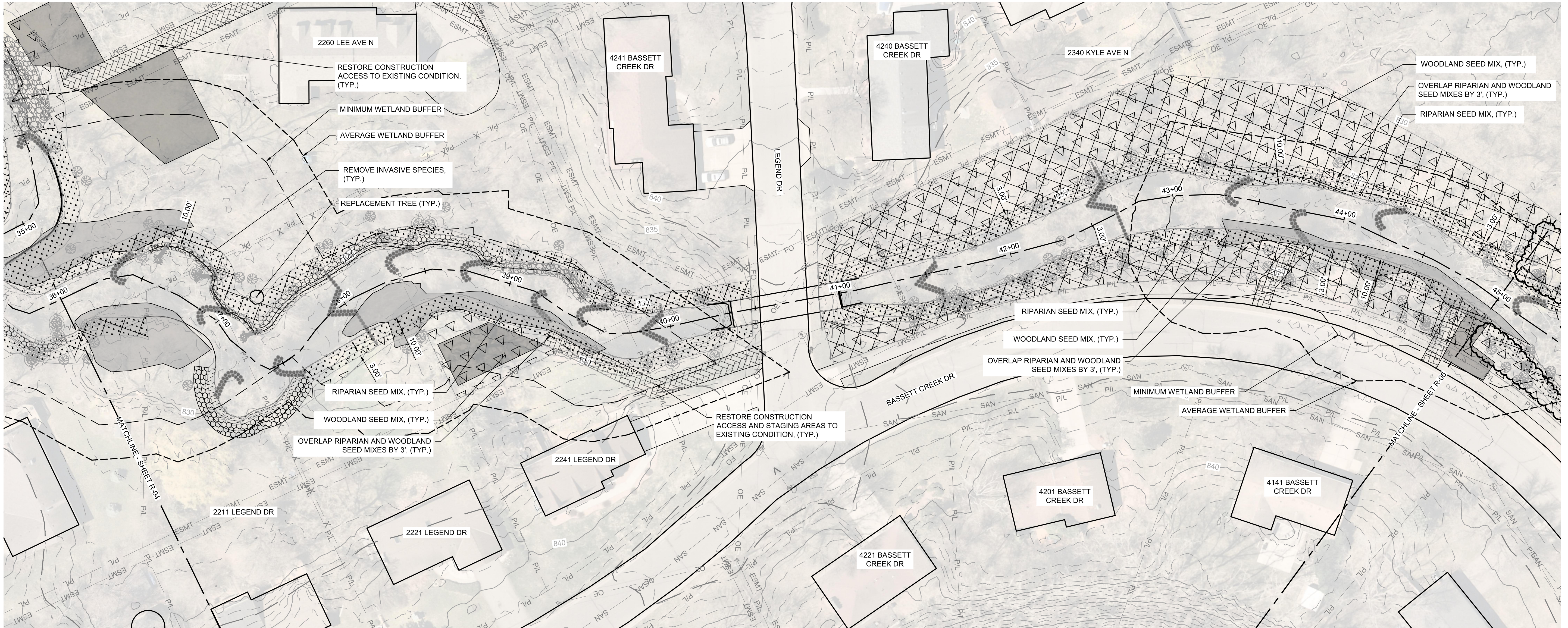
BASSETT CREEK WATERSHED MANAGEMENT COMMISSION  
GOLDEN VALLEY, MINNESOTA

BASSETT CREEK MAIN STEM RESTORATION - PHASE 2  
GOLDEN VALLEY, MINNESOTA  
VEGETATION RESTORATION PLAN  
(STA. 27+00 TO 36+00)

BARR PROJECT #	23272114.00
DWG #	R-04
REV #	C



ORIGINAL DRAWING SIZE: ANSI FULL BLEED D (22.00 X 34.00 INCHES) PLOT SCALE: 1:1 PLOT DATE: 12/19/2025 3:49 PM  
CADD USER: DILLON R. MARTIN FILE: MDESIGN23272114.0023272114\_R-XX.DWG



1 PLAN: BASSETT CREEK VEGETATION RESTORATION (STA. 36+00 TO 45+00)

0 30 60  
SCALE IN FEET

- GENERAL NOTES:
- COORDINATE WITH LANDOWNERS TO CONFIRM THEIR RESTORATION SEEDING PREFERENCES.
  - ALL LANDSCAPING TO BE RESTORED TO EQUAL OR BETTER CONDITION THAN PRE-CONSTRUCTION

100% DESIGN  
ISSUED FOR REVIEW  
NOT FOR CONSTRUCTION

I HEREBY CERTIFY THAT THIS PLAN, SPECIFICATION, OR REPORT WAS PREPARED BY ME OR UNDER MY DIRECT SUPERVISION AND THAT I AM A DULY LICENSED PROFESSIONAL ENGINEER UNDER THE LAWS OF THE STATE OF MINNESOTA.

PRINTED NAME -  
SIGNATURE -  
DATE - LICENSE # -

-	-	-	-	-	-	-
-	-	-	-	-	-	-
C	DRM3	BHD	JCO	12/22/2025	ISSUED FOR REVIEW	
B	DRM3	BHD	JCO	11/13/2025	ISSUED FOR REVIEW	
A	DRM3	BHD	JCO	06/20/2025	ISSUED FOR REVIEW	
#	BY	CHK	APP	DATE	RELEASE/REVISION DESCRIPTION	

**BARR**

BARR ENGINEERING CO.  
4300 MARKETPOINTE DRIVE  
SUITE 200  
MINNEAPOLIS, MN 55435

PH: 1-800-632-2277  
WWW.BARR.COM  
MINNESOTA ENGINEERING FIRM  
NUMBER 10104111545

BASSETT CREEK WATERSHED MANAGEMENT COMMISSION  
GOLDEN VALLEY, MINNESOTA

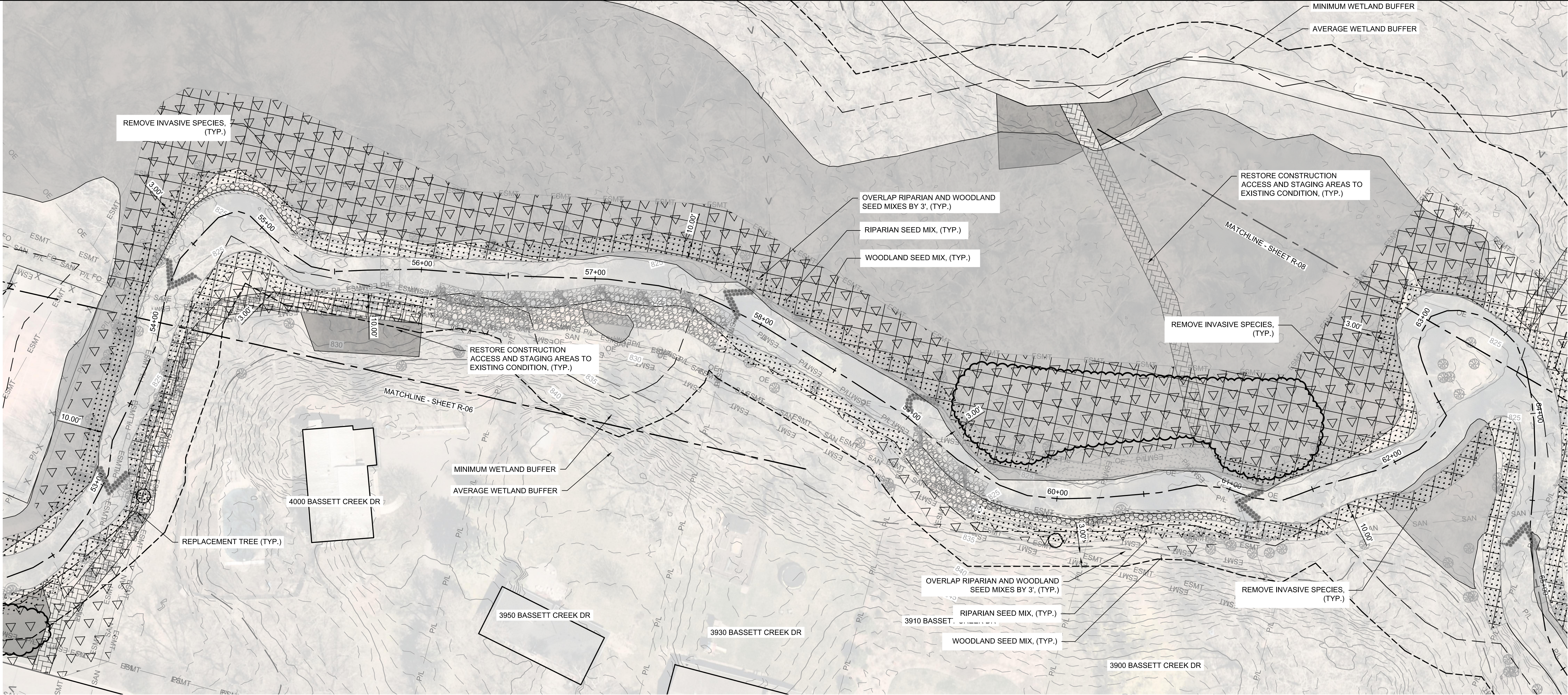
BASSETT CREEK MAIN STEM RESTORATION - PHASE 2  
GOLDEN VALLEY, MINNESOTA  
VEGETATION RESTORATION PLAN  
(STA. 36+00 TO 45+00)

BARR PROJECT #	23272114.00
DWG #	R-05
REV #	C









- GENERAL NOTES:**
- COORDINATE WITH LANDOWNERS TO CONFIRM THEIR RESTORATION SEEDING PREFERENCES.
  - ALL LANDSCAPING TO BE RESTORED TO EQUAL OR BETTER CONDITION THAN PRE-CONSTRUCTION
- PLANTING NOTES**
- PLUGS TO BE LAID OUT IN THE FIELD BY LANDSCAPE ARCHITECT
  - ALL PLUGS PLANTED 24" O.C.

PLUG SCHEDULE			
Common Name	Scientific Name	Size	Qty
Wild Leek	Allium tricoccum	PLUG	100
Clasping Dogbane	Apocynum sibiricum	PLUG	250
American Spikenard	Aralia racemosa	PLUG	200
Swamp Milkweed	Asclepias incarnata	PLUG	150
Fringed Sedge	Carex crinita	PLUG	100
Pennsylvania Sedge	Carex pennsylvanica	PLUG	300
Blue Cohosh	Caulophyllum thalictroides	PLUG	200
Big-leaved Aster	Eurybia macrophylla	PLUG	250
Sweet Indian Plantain	Hasteola suaveolens	PLUG	175
Cardinal Flower	Lobelia cardinalis	PLUG	50
Fringed Loosestrife	Lysimachia ciliata	PLUG	50
Lion's Foot	Nabalus alba	PLUG	175
Sensitive Fern	Onoclea sensibilis	PLUG	200
Jacobs Ladder	Polemonium reptans	PLUG	250
Marsh Cinquefoil	Potentilla palustris	PLUG	50
		TOTAL	2500

100% DESIGN  
ISSUED FOR REVIEW  
NOT FOR CONSTRUCTION

ORIGINAL DRAWING SIZE: ANSI FULL BLEED D (22.00 X 34.00 INCHES) PLOT SCALE: 1:1 PLOT DATE: 12/19/2025 3:50 PM  
CADD USER: DILLON R. MARTIN FILE NAME: MDESIGN23272114\_0023272114\_R-XX.DWG

I HEREBY CERTIFY THAT THIS PLAN, SPECIFICATION, OR REPORT WAS PREPARED BY ME OR UNDER MY DIRECT SUPERVISION AND THAT I AM A DULY LICENSED PROFESSIONAL ENGINEER UNDER THE LAWS OF THE STATE OF MINNESOTA.

PRINTED NAME: \_\_\_\_\_  
SIGNATURE: \_\_\_\_\_  
DATE: \_\_\_\_\_ LICENSE #: \_\_\_\_\_

-	-	-	-	-	-	
-	-	-	-	-	-	
-	-	-	-	-	-	
C	DRM3	BHD	JCO	12/22/2025	ISSUED FOR REVIEW	
B	DRM3	BHD	JCO	11/13/2025	ISSUED FOR REVIEW	
A	DRM3	BHD	JCO	06/20/2025	ISSUED FOR REVIEW	
#	BY	CHK	APP	DATE	RELEASE/REVISION DESCRIPTION	



BARR ENGINEERING CO.  
4300 MARKETPOINTE DRIVE  
SUITE 200  
MINNEAPOLIS, MN 55435

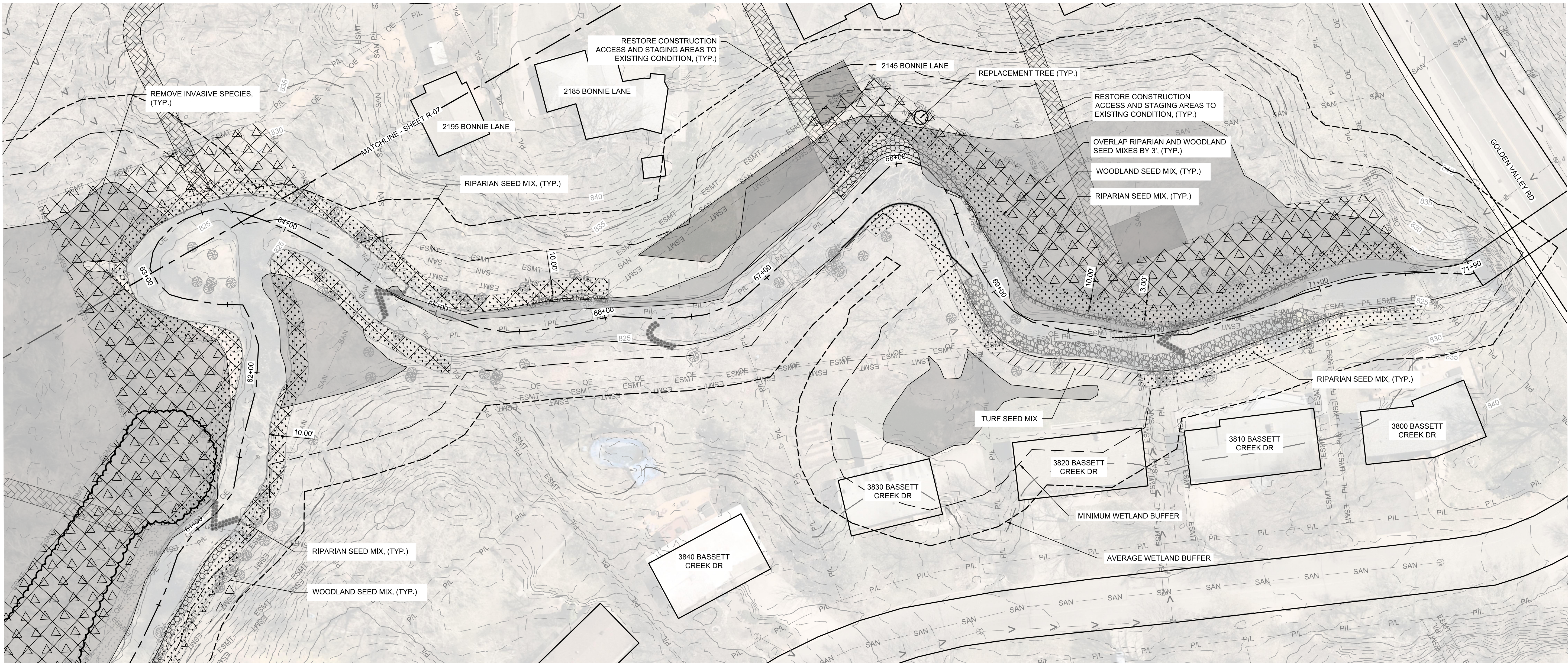
PH: 1-800-632-2277  
WWW.BARR.COM  
MINNESOTA ENGINEERING FIRM  
NUMBER 10104111545

BASSETT CREEK WATERSHED MANAGEMENT COMMISSION  
GOLDEN VALLEY, MINNESOTA

BASSETT CREEK MAIN STEM RESTORATION - PHASE 2  
GOLDEN VALLEY, MINNESOTA  
VEGETATION RESTORATION PLAN  
(STA. 54+00 TO 63+00)

BARR PROJECT #	23272114.00
DWG #	R-07
REV #	C





1 PLAN: BASSETT CREEK VEGETATION RESTORATION (STA. 63+00 TO 72+00)

0 30 60  
SCALE IN FEET

North Arrow

- GENERAL NOTES:
- COORDINATE WITH LANDOWNERS TO CONFIRM THEIR RESTORATION SEEDLING PREFERENCES.
  - ALL LANDSCAPING TO BE RESTORED TO EQUAL OR BETTER CONDITION THAN PRE-CONSTRUCTION

100% DESIGN  
ISSUED FOR REVIEW  
NOT FOR CONSTRUCTION

I HEREBY CERTIFY THAT THIS PLAN, SPECIFICATION, OR REPORT WAS PREPARED BY ME OR UNDER MY DIRECT SUPERVISION AND THAT I AM A DULY LICENSED PROFESSIONAL ENGINEER UNDER THE LAWS OF THE STATE OF MINNESOTA.

PRINTED NAME -  
SIGNATURE -  
DATE - LICENSE # -

-	-	-	-	-	-	-
-	-	-	-	-	-	-
C	DRM3	BHD	JCO	12/22/2025	ISSUED FOR REVIEW	
B	DRM3	BHD	JCO	11/13/2025	ISSUED FOR REVIEW	
A	DRM3	BHD	JCO	06/20/2025	ISSUED FOR REVIEW	
#	BY	CHK	APP	DATE	RELEASE/REVISION DESCRIPTION	



**BARR**

BARR ENGINEERING CO.  
4300 MARKETPOINTE DRIVE  
SUITE 200  
MINNEAPOLIS, MN 55435

PH: 1-800-632-2277  
WWW.BARR.COM  
MINNESOTA ENGINEERING FIRM  
NUMBER 10104111545

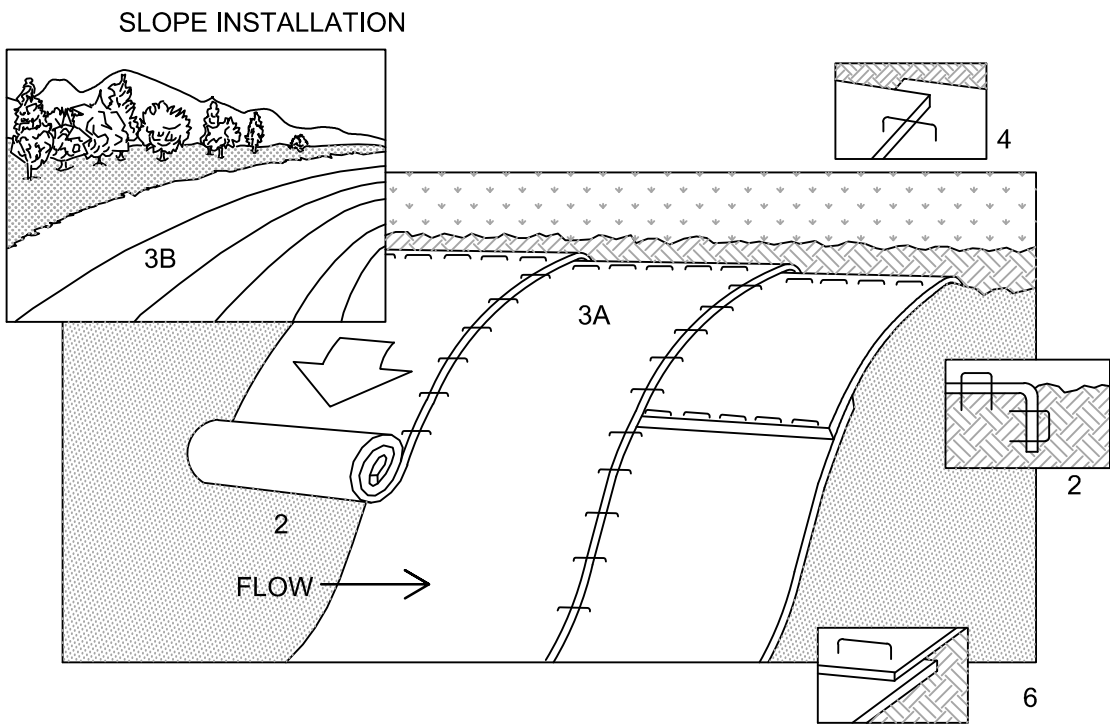
BASSETT CREEK WATERSHED MANAGEMENT COMMISSION  
GOLDEN VALLEY, MINNESOTA

BASSETT CREEK MAIN STEM RESTORATION - PHASE 2  
GOLDEN VALLEY, MINNESOTA  
VEGETATION RESTORATION PLAN  
(STA. 63+00 TO 72+00)

BARR PROJECT #	23272114.00
DWG #	R-08
REV #	C

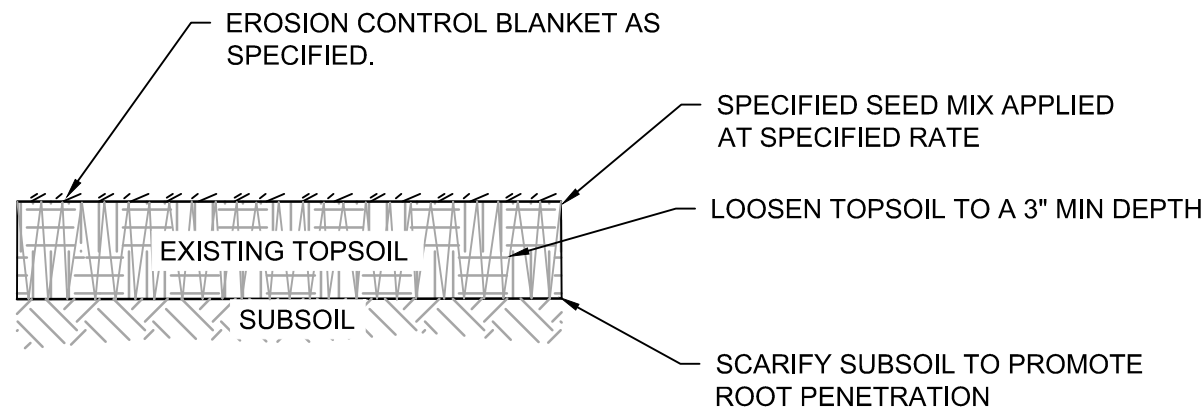


ORIGINAL DRAWING SIZE: ANSI FULL BLEED D (22.00 X 34.00 INCHES) PLOT SCALE: 1:1 PLOT DATE: 12/18/2025 3:18 PM  
CADD USER: DILLON R. MARTIN FILE: MDESIGN03272114.0023272114\_R-09.DWG



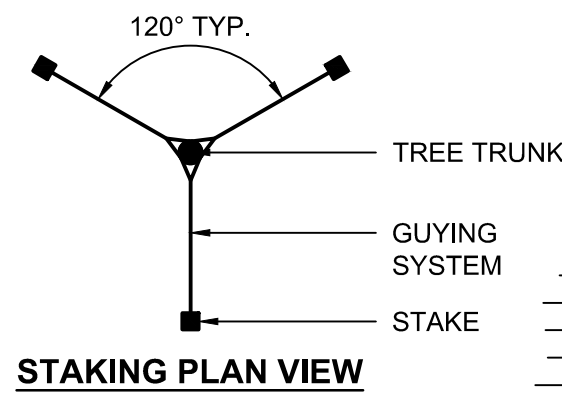
- NOTES:
- REFER TO MANUFACTURER RECOMMENDATIONS FOR STAPLE PATTERNS FOR SLOPE INSTALLATIONS.
  - PREPARE SOIL BY LOOSENING TOP 1-2 INCHES AND APPLY SEED (AND FERTILIZER WHERE REQUIRED) PRIOR TO INSTALLING BLANKETS. GROUND SHOULD BE SMOOTH AND FREE OF DEBRIS.
  - BEGIN (A) AT THE TOP OF THE SLOPE AND ROLL THE BLANKETS DOWN OR (B) AT ONE END OF THE SLOPE AND ROLL THE BLANKETS HORIZONTALLY ACROSS THE SLOPE.
  - THE EDGES OF PARALLEL BLANKETS MUST BE STAPLED WITH APPROXIMATELY 6" OVERLAP, WITH THE UPHILL BLANKET ON TOP.
  - WHEN BLANKETS MUST BE SPICED DOWN THE SLOPE, PLACE BLANKETS END OVER END (SHINGLE STYLE) WITH APPROXIMATELY 6" OVERLAP. STAPLE THROUGH OVERLAPPED AREA, APPROXIMATELY 12" APART.
  - BLANKET MATERIALS SHALL BE AS SPECIFIED OR AS APPROVED BY ENGINEER.

**1** DETAIL: EROSION CONTROL BLANKET INSTALLATION  
NOT TO SCALE

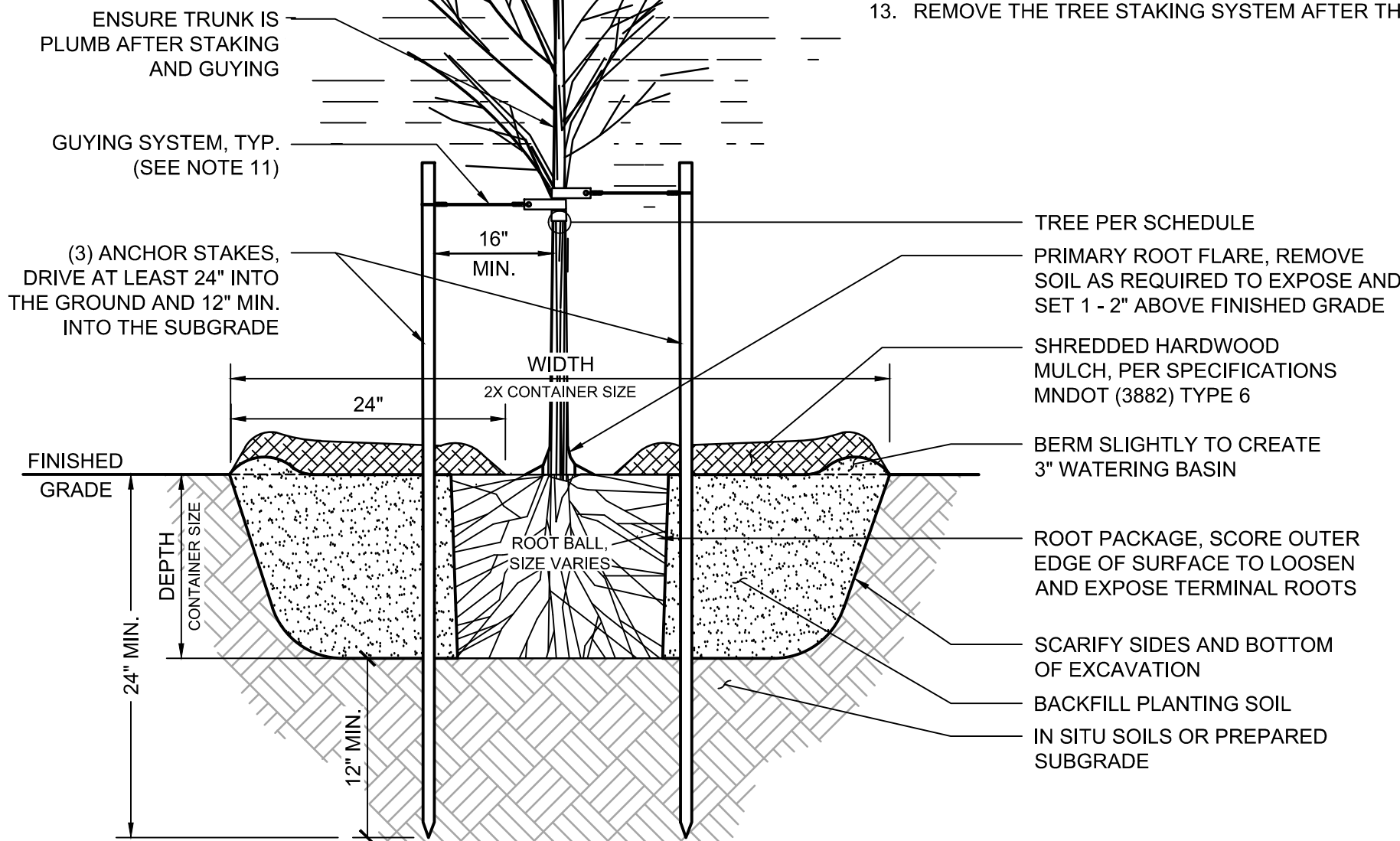


- NOTE:
- WHERE REQUIRED, PLANT SHRUBS, TREES, AND HERBACEOUS PLUGS ACCORDING TO PLAN.

**4** DETAIL: TOPSOIL AND SEEDING  
NOT TO SCALE



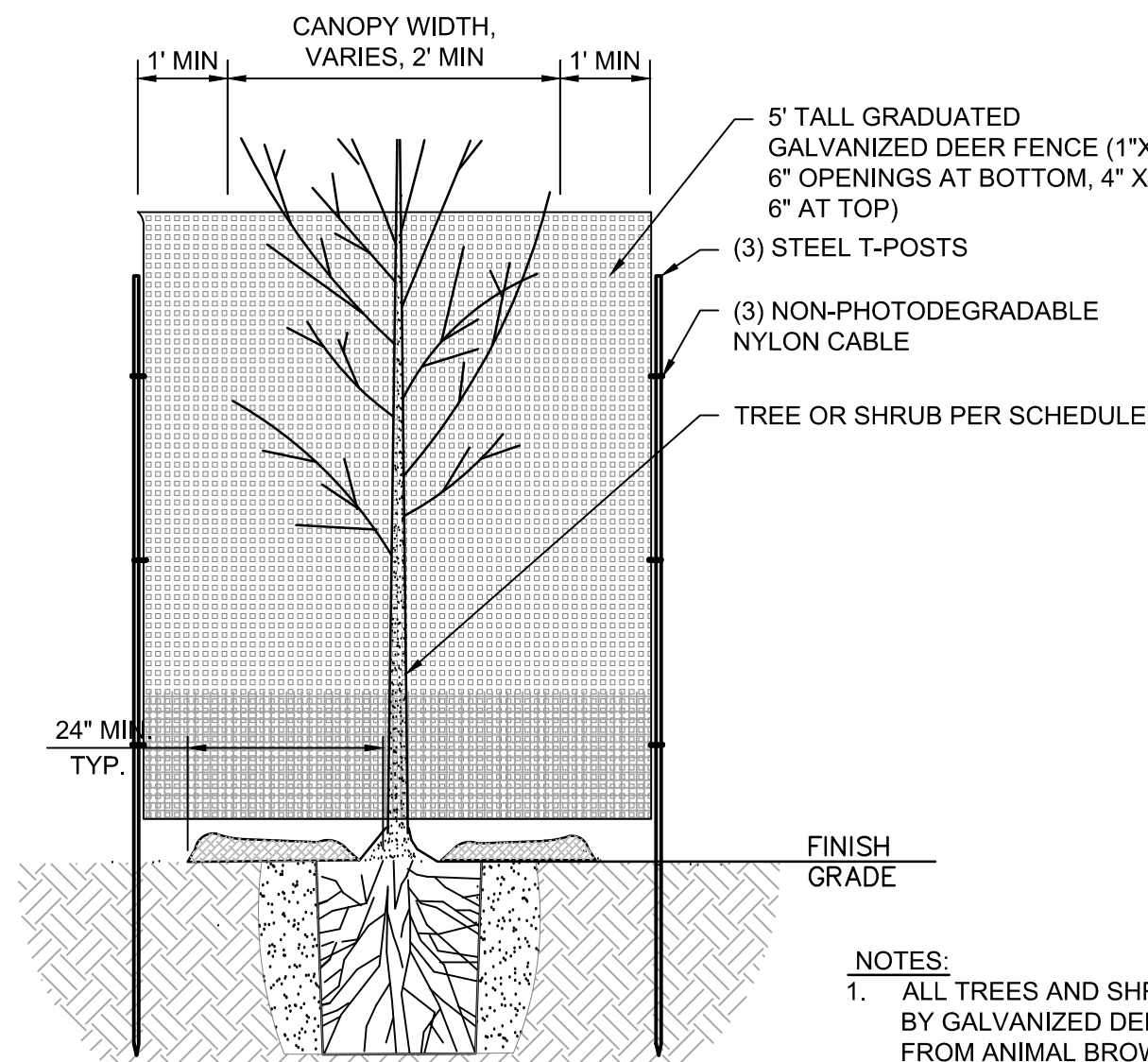
**2** DETAIL: DECIDUOUS TREE PLANTING  
NOT TO SCALE



- HERBACEOUS PLUG PLANTING NOTES:
- PREPARE SOIL WITH COMPOST AMENDMENT PER PLAN
  - PROVIDE AND INSTALL PLANTS PER SCHEDULE.
  - EXCAVATE HOLE 3 TIMES WIDTH OF ROOTBALL.
  - BREAK BOTTOM OF ROOTBALL TO LOOSEN ROOTS.
  - PLANT THROUGH MULCH ALIGNING ROOTBALL TOP EVEN WITH SOIL - DO NOT PLANT TOO DEEP OR TOO SHALLOW. FIRM SOIL TO ENSURE GOOD CONTACT WITH ROOTS.
  - APPLY 3" DEPTH SHREDDED HARDWOOD MULCH TO ENTIRE PLANTING AREA (SOIL PREPARED AS PER SPECIFICATIONS).
  - NO MULCH TO BE IN CONTACT WITH PLANT.
  - WATER THOROUGHLY AFTER PLANTING.
  - CONTRACTOR TO WATER AS NECESSARY TO MAINTAIN IN A HEALTHY CONDITION. AT THE END OF THIS PERIOD ANY DEAD PLANTS SHALL BE REPLACED AT CONTRACTOR'S EXPENSE.

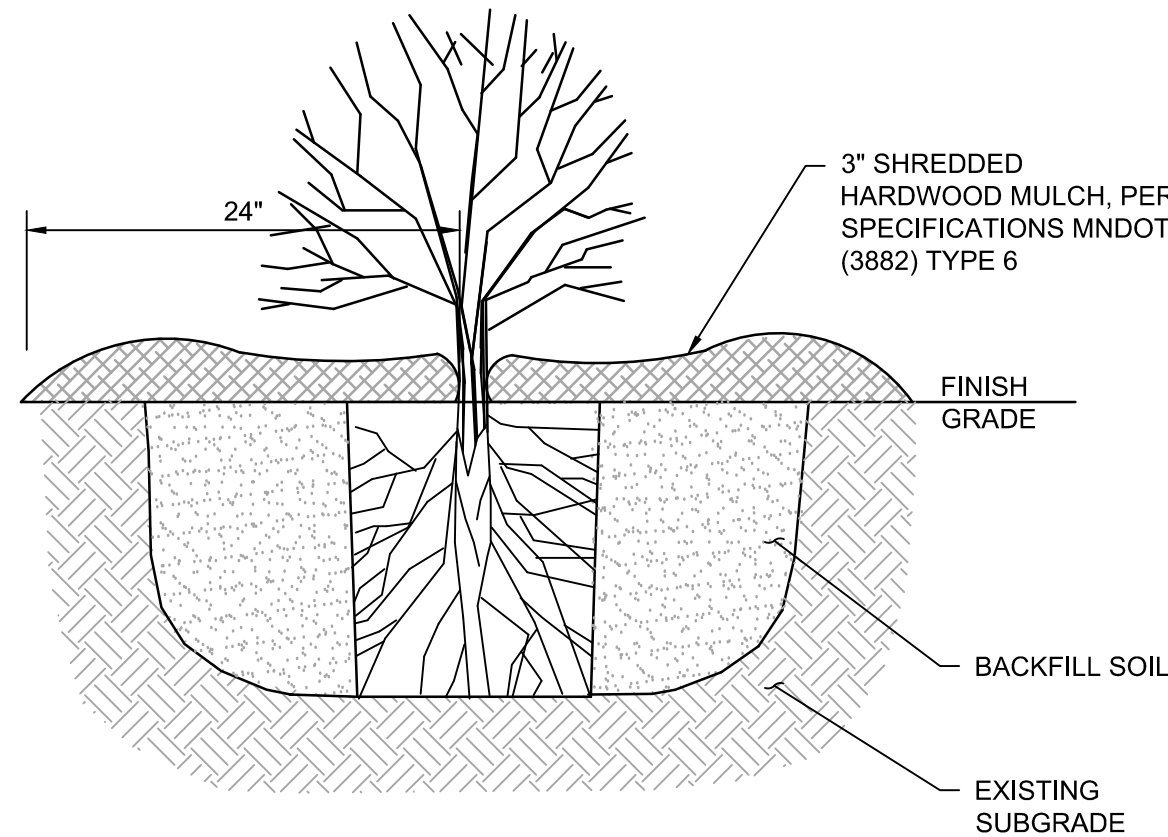
**3** DETAIL: HERBACEOUS PLUG  
NOT TO SCALE

- NOTES:
- EXCAVATE SOIL AS REQUIRED. REFER TO TREE PLANTING HOLE DIMENSION REFERENCE TABLE. PLANTING HOLE DEPTH SHOULD NOT EXCEED MEASUREMENT FROM ROOT FLARE TO BOTTOM OF ROOT PACKAGE.
  - SCARIFY BOTTOM AND SIDES OF HOLE PRIOR TO PLANTING.
  - PREPARE PLANTING SOIL AS SPECIFIED. SOIL MUST BE PRE-MIXED OR MIXED TO A UNIFORM TEXTURE ON SITE PRIOR TO PLACEMENT.
  - REMOVE AND DISPOSE OF THE ROOT PACKAGING MATERIAL AS NOTED AND PERFORM ANY CORRECTIVE PRUNING OF TOP AND ROOTS AS SPECIFIED TO PREPARE THE TREE FOR PLANTING. DO NOT CUT OR DAMAGE THE CENTRAL LEADER.
  - SET TREE ON IN SITU SOIL OR THOROUGHLY-COMPACTED BACKFILL AND PLUMB.
  - BACKFILL AROUND PREPARED ROOT PACKAGE WITH PLANTING SOIL WITH 6" MAX. LIFTS. GENTLY FIRM SOIL AROUND THE ROOT MASS WITH EACH LIFT TO MAINTAIN PLUMB.
  - ENSURE THE STAKING SYSTEM DOES NOT DIRECTLY ANCHOR TO OR PENETRATE THE ROOT BALL UPON INSTALLATION.
  - WATER THOROUGHLY WITHIN 2 HOURS AFTER PLANTING TO FILL VOIDS. BACKFILL ANY VOIDS CREATED DURING INITIAL WATERING AND RE-WATER.
  - APPLY MULCH OVER SOIL SURFACE AT THE BASE OF THE TREE IMMEDIATELY AFTER PLANTING. ENSURE NO MULCH IS IN CONTACT WITH THE BASE OF TREE AT FINISHED GRADE.
  - GUYING SYSTEM, AS SPECIFIED. ATTACH GUYING SYSTEM TO TRUNK AND POST AND RE-CHECK PLUMB.
  - MAINTAIN TREE IN A PLUMB POSITION THROUGHOUT THE INITIAL ESTABLISHMENT PERIOD.
  - REMOVE THE TREE STAKING SYSTEM AFTER THE INITIAL ESTABLISHMENT PERIOD, AS SPECIFIED.



- NOTES:
- ALL TREES AND SHRUBS SHALL BE ENCLOSED BY GALVANIZED DEER FENCING TO PROTECT FROM ANIMAL BROWSING. TREE AND SHRUB PROTECTION SHALL BE CONSIDERED INCIDENTAL TO TREE AND SHRUB PLANTING.

**6** DETAIL: TREE AND SHRUB PROTECTION FENCE  
NOT TO SCALE



- SHRUB PLANTING NOTES:
- PROVIDE AND INSTALL PLANTS PER SCHEDULE.
  - REMOVE DEAD OR DAMAGED BRANCHES. RETAIN THE NATURAL FORM OF PLANT.
  - IF ROOT FLARE IS NOT EXPOSED WITHIN THE CONTAINER EXCAVATE SURFACE SOIL TO BASE OF ROOT FLARE.
  - DIG PLANT HOLES 6" MIN. LARGER THAN ROOT MASS, ALL SIDES.
  - SET SHRUB ON LIGHTLY FIRMED BACKFILL SOIL SO ROOT FLARE IS EVEN WITH FINISH GRADE.
  - PLACE SHREDDED HARDWOOD MULCH (MN/DOT SPEC 3882.2 TYPE 6 - WEED SEED FREE SHREDDED HARDWOOD.) TO A RADIUS OF 24" AND TO A DEPTH OF 3" AROUND PLANT.
  - NO MULCH TO BE IN CONTACT WITH PLANT.

**4** DETAIL: SHRUB AND VINE PLANTING  
NOT TO SCALE

I HEREBY CERTIFY THAT THIS PLAN, SPECIFICATION, OR REPORT WAS PREPARED BY ME OR UNDER MY DIRECT SUPERVISION AND THAT I AM A DULY LICENSED PROFESSIONAL ENGINEER UNDER THE LAWS OF THE STATE OF MINNESOTA.

PRINTED NAME: \_\_\_\_\_

SIGNATURE: \_\_\_\_\_

DATE: \_\_\_\_\_ LICENSE #: \_\_\_\_\_

-	-	-	-	-	-	-
-	-	-	-	-	-	-
-	-	-	-	-	-	-
C	DRM3	BHD	JCO	12/22/2025	ISSUED FOR REVIEW	
B	DRM3	BHD	JCO	11/13/2025	ISSUED FOR REVIEW	
A	DRM3	BHD	JCO	06/20/2025	ISSUED FOR REVIEW	
#	BY	CHK	APP	DATE	RELEASE/REVISION DESCRIPTION	



BARR ENGINEERING CO.  
4300 MARKETPOINTE DRIVE  
SUITE 200  
MINNEAPOLIS, MN 55435

PH: 1-800-632-2277  
WWW.BARR.COM  
MINNESOTA ENGINEERING FIRM  
NUMBER 1010411545

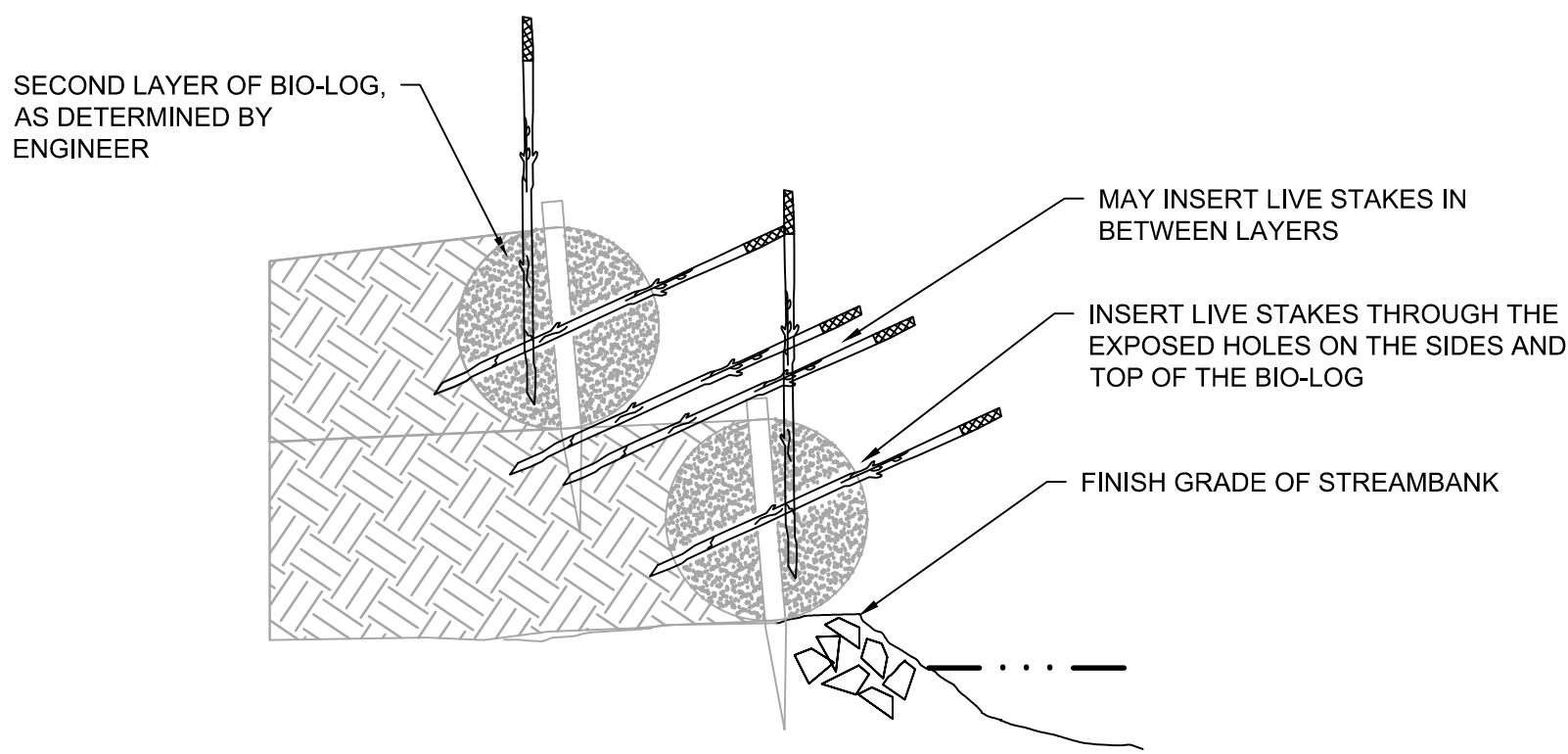
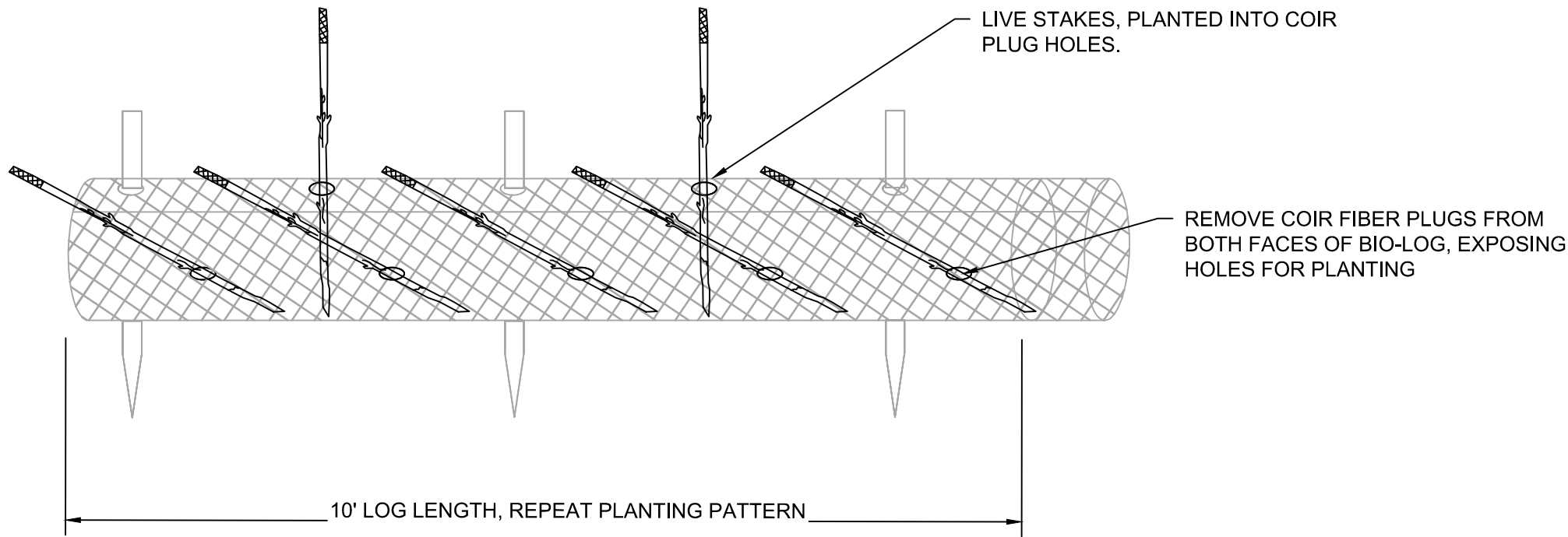
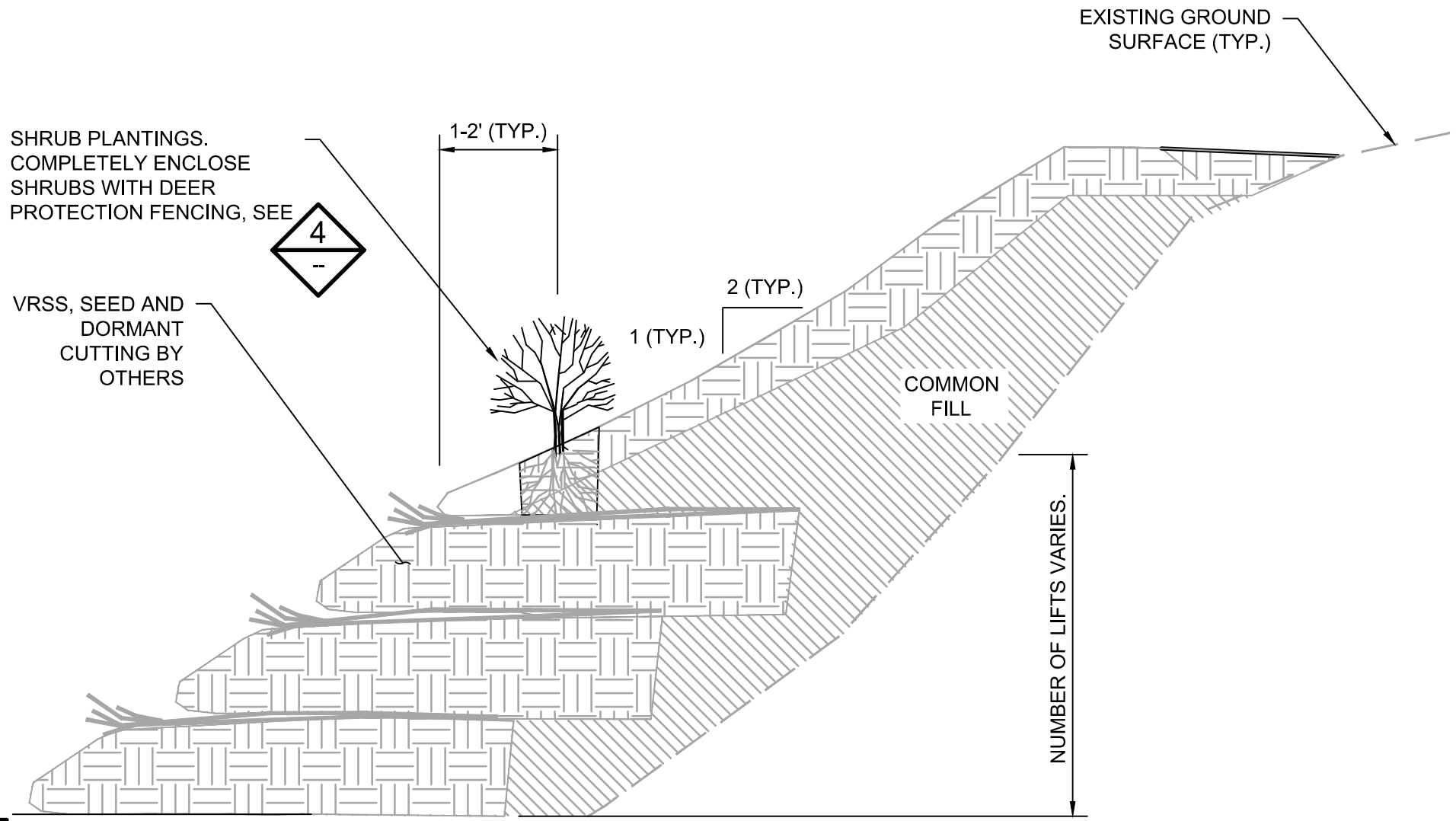
BASSETT CREEK WATERSHED MANAGEMENT COMMISSION  
GOLDEN VALLEY, MINNESOTA

BASSETT CREEK MAIN STEM RESTORATION - PHASE 2  
GOLDEN VALLEY, MINNESOTA  
RESTORATION DETAILS

BARR PROJECT #	23272114.00
DWG #	R-09
REV #	C

100% DESIGN  
ISSUED FOR REVIEW  
NOT FOR CONSTRUCTION

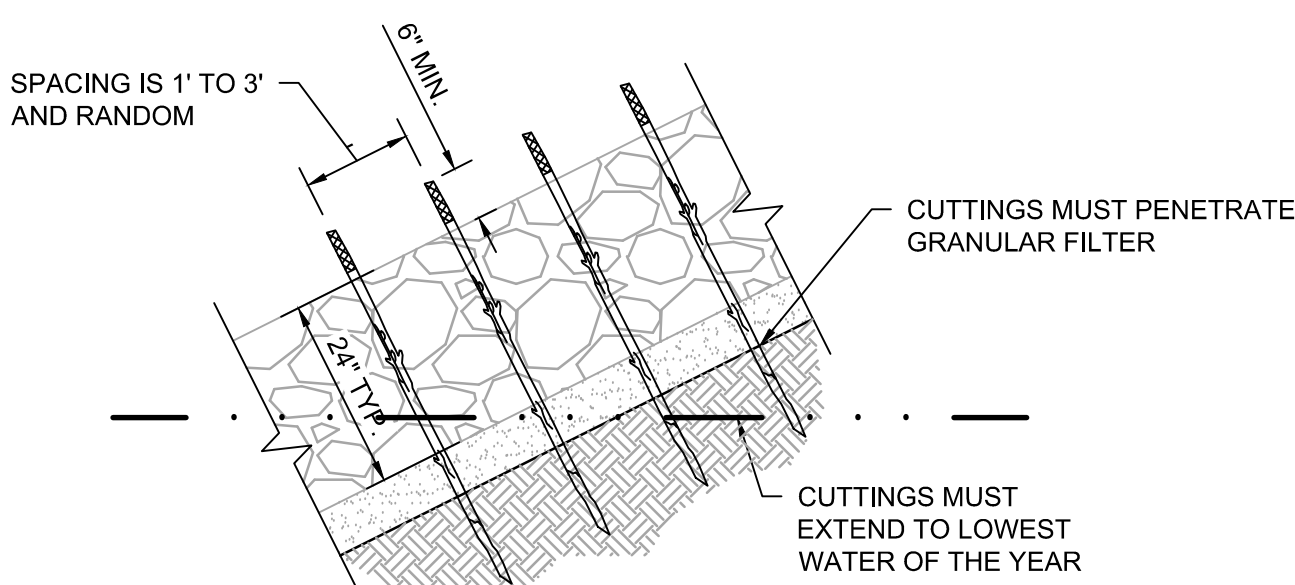
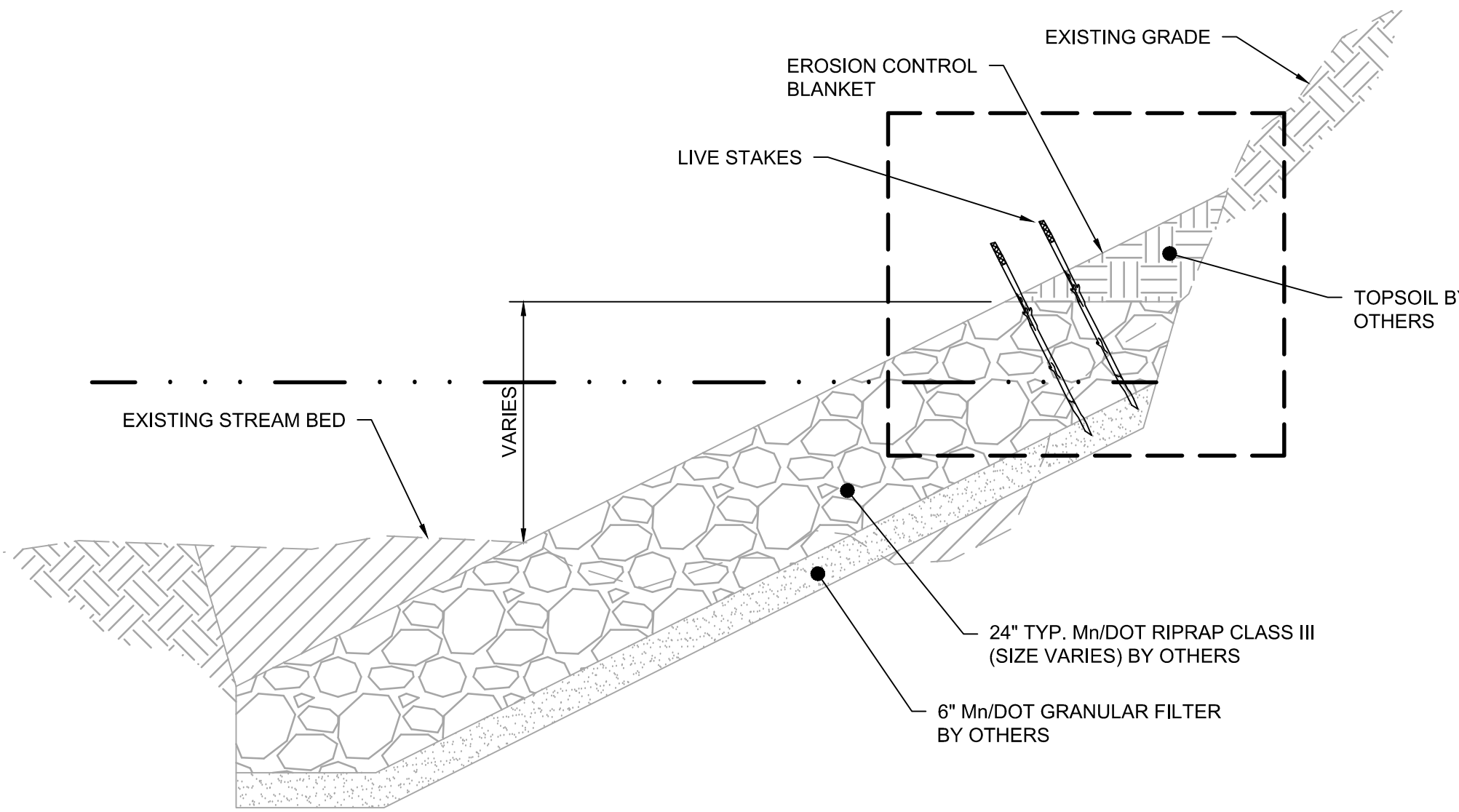
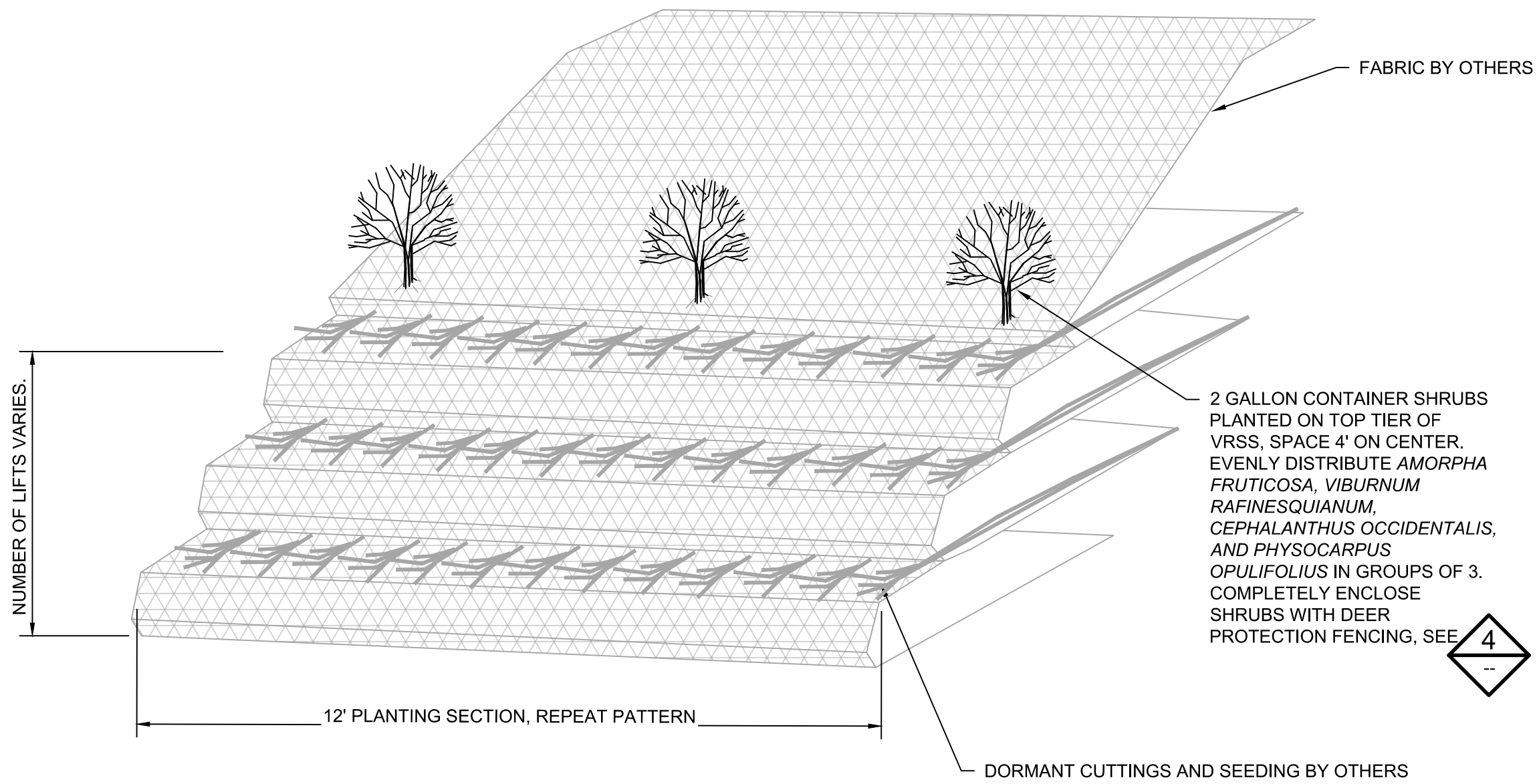




- NOTES:
- COIR LOGS PLACED AND ANCHORED BY OTHERS

1  
-  
DETAIL: COIR LOG WITH PLANTING HOLES  
NOT TO SCALE

A  
-  
SECTION: LIVE PLANT VEGETATED REINFORCED SOIL SLOPE (V.R.S.S.)  
NOT TO SCALE

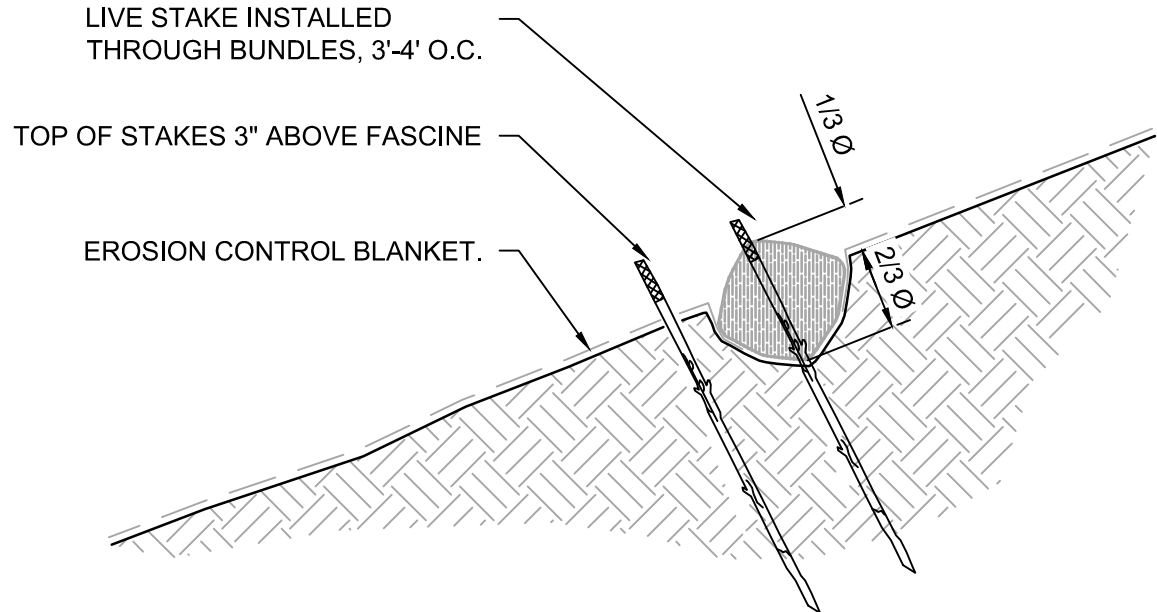
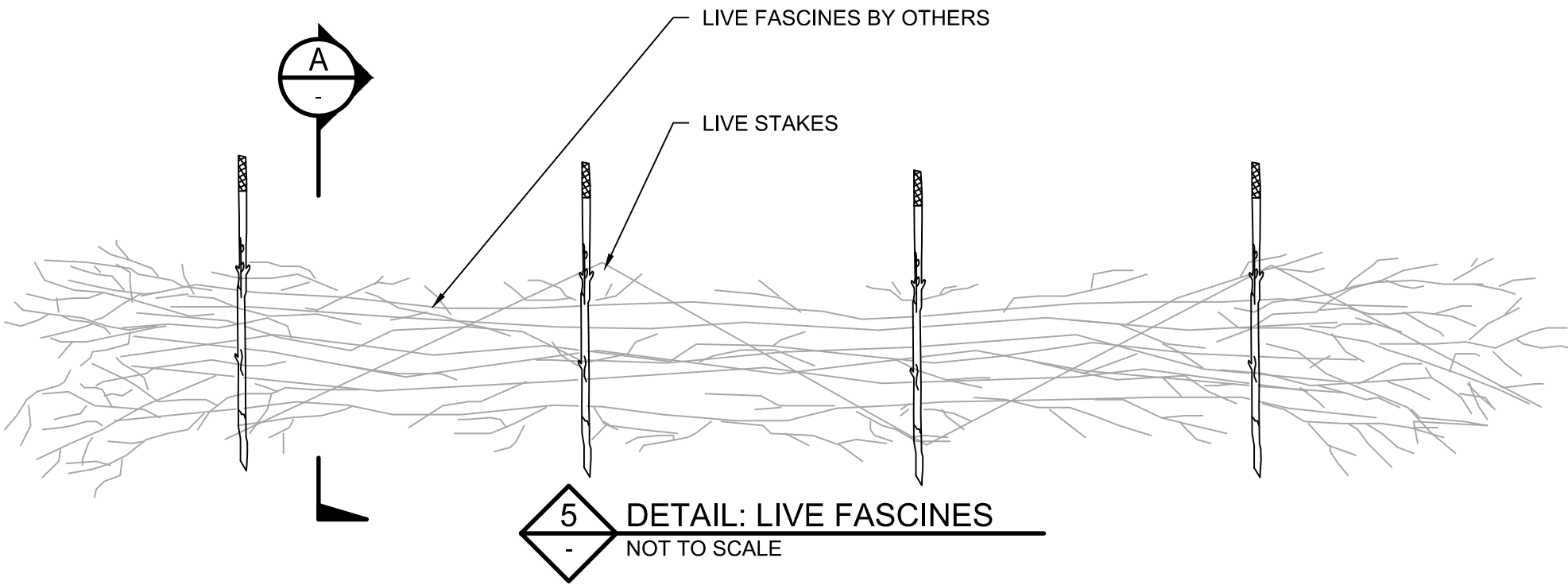


STAKE PLANTING

- NOTES:
- LIVE STAKES SHALL BE 40% CORNUS SERICEA, 30% ALNUS INCANA, 15% SALIX BEBIANA, AND 15% SAMBUCUS CANADENSIS DISTRIBUTED EVENLY ACROSS THE SITE.
  - MATERIAL SHOULD BE FROM AN AREA WITH SIMILAR SOIL, CLIMATE, AND LOCATION RELATIVE TO THE STREAM.
  - THE MATERIAL SHALL BE AT LEAST TWO YEARS OLD AND FREE OF DISEASE, ROT, OR INSECT INFESTATION.
  - MATERIAL SHALL BE HARVESTED WHILE DORMANT AND SOAKED (1 TO 14 DAYS) BEFORE INSTALLATION.

2  
-  
DETAIL: LIVE STAKES IN RIPRAP TOE PROTECTION  
NOT TO SCALE

B  
-  
SECTION: LIVE PLANT VEGETATED REINFORCED SOIL SLOPE (V.R.S.S.)  
NOT TO SCALE



A  
-  
SECTION: LIVE FASCINES  
NOT TO SCALE

- NOTES
- LIVE FASCINES BY OTHERS. CONTRACTORS TO INSTALL LIVE STAKES INTO FASCINES AS DRAWN.
  - SOAK THE LIVE BRANCHES FOR A MINIMUM OF 24 HOURS (IDEALLY 5-7 DAYS) IN FLOWING WATER BEFORE PLANTING.
  - PLACE LIVE STAKES AT A 3'-4' INTERVAL THROUGH THE CENTER OF THE BUNDLE. LEAVE 3 INCHES OF STAKES ABOVE THE BUNDLE.

100% DESIGN  
ISSUED FOR REVIEW  
NOT FOR CONSTRUCTION

ORIGINAL DRAWING SIZE: ANSI FULL BLEED D (22.00 X 34.00 INCHES) PLOT SCALE: 1:1 PLOT DATE: 12/18/2025 3:18 PM  
CADD USER: DILLON R. MARTIN FILE: MDESIGN23272114.0023272114\_R-09.DWG

I HEREBY CERTIFY THAT THIS PLAN, SPECIFICATION, OR REPORT WAS PREPARED BY ME OR UNDER MY DIRECT SUPERVISION AND THAT I AM A DULY LICENSED PROFESSIONAL ENGINEER UNDER THE LAWS OF THE STATE OF MINNESOTA.

PRINTED NAME -  
SIGNATURE -  
DATE - LICENSE # -

-	-	-	-	-	-	-
-	-	-	-	-	-	-
-	-	-	-	-	-	-
C	DRM3	BHD	JCO	12/22/2025	ISSUED FOR REVIEW	
B	DRM3	BHD	JCO	11/13/2025	ISSUED FOR REVIEW	
A	DRM3	BHD	JCO	06/20/2025	ISSUED FOR REVIEW	
#	BY	CHK	APP	DATE	RELEASE/REVISION DESCRIPTION	

**BARR**

BARR ENGINEERING CO.  
4300 MARKETPOINTE DRIVE  
SUITE 200  
MINNEAPOLIS, MN 55435

PH: 1-800-632-2277  
WWW.BARR.COM  
MINNESOTA ENGINEERING FIRM  
NUMBER 10104111545

BASSETT CREEK WATERSHED MANAGEMENT COMMISSION  
GOLDEN VALLEY, MINNESOTA

BASSETT CREEK MAIN STEM RESTORATION - PHASE 2  
GOLDEN VALLEY, MINNESOTA  
RESTORATION DETAILS

BARR PROJECT #	23272114.00
DWG #	R-10
REV #	C